



DOWNTOWN BURIEN **WAYFINDING SIGNAGE PLAN**

this page is intentionally left blank

ACKNOWLEDGMENTS

The following people contributed their time and expertise to make the downtown wayfinding signage plan possible:

Mayor Lucy Krakowiak

Elected Officials

Councilmember Bob Edgar
Councilmember Steve Armstrong
Councilmember Austin Bell
Councilmember Lauren Berkowitz
Deputy Mayor Nancy Tosta
Council-member Debi Wagner

Wayfinding Steering Committee

Melinda Berham
Pat Dillon
Curtis Olsen
Maureen Hoffmann
Robbie Howell
Carlanne McCrystal
Matt Wendlend

Project Management

City of Burien
Chris Craig, Economic Development Specialist

Technical Advisory

City of Burien
Maiya Andrews, Public Works Director
Chip Davis, Community Development Director
David Johanson, Senior Planner
Gina Kallman, Cultural Arts Supervisor
Brian Roberts, Assistant Public Works Director
Andrea Snyder, Economic Development Manager

KPG

Paul Fuesel
Phuong Nguyen
Holly Williams

this page is intentionally left blank

TABLE OF CONTENTS

SECTION	PAGE
1.0 Introduction >>>	1
Purpose of this Document	
Background Information	
What is Wayfinding?	
Downtown Wayfinding Design Goals	
Outreach Process and Design Approval	
Sign Design Parameters	
2.0 Downtown Destinations >>>	4
Proposed Downtown Destinations	
3.0 Downtown Wayfinding >>>	6
Proposed Downtown Wayfinding Sign Locations Plan	
Proposed Public Parking Sign Locations Plan	
4.0 Wayfinding Sign Types and Standards >>>	8
Pedestrian/Bike Directional Signage	
Vehicular Directional Signage	
Information Kiosk	
Public Parking Type 1 and 2 Signage	
5.0 Implementation & Phasing >>>	16
Future Phases	
Appendix A: Existing Signage >>>	19
Appendix B: Preliminary Wayfinding Concepts >>>	25
Appendix C: Phase 1 & 2 Sign Location Plan and Matrices >>>	36
Appendix D: Applicable WSDOT Standard Details >>>	48

this page is intentionally left blank

PURPOSE OF THIS DOCUMENT

This document supports the project goals, outlines policy context, provides sign designs to enhance the character and identity of the downtown, identifies destinations, prioritizes routes, proposes sign locations, and concludes with a phasing and implementation plan.

The intention of this document is to provide guidance for the design and development of the wayfinding signs. The sign design and materials contributes to the City of Burien's ongoing effort to create a distinct cohesive identity and an attractive urban landscape for Downtown.

BACKGROUND INFORMATION

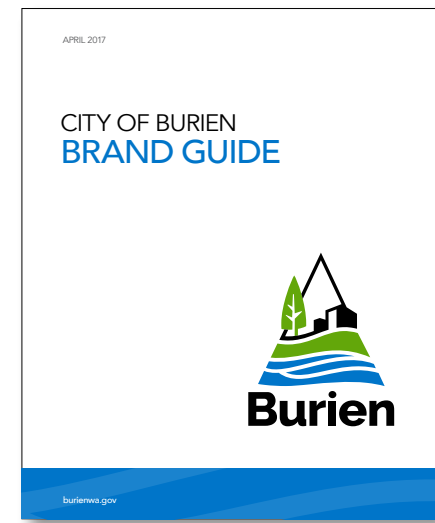
The City of Burien (City) recognizes the need for creating a comprehensive downtown wayfinding system that benefits pedestrians and bicyclists, and directs motorists to park and walk, encouraging "park once - shop twice" behavior, by improving connectivity and providing clearer awareness of downtown destinations. In the 2016 Downtown Mobility Study, downtown wayfinding was identified as a priority goal to help expand the multimodal environment and development potential in the downtown.

Concurrent with the Downtown Mobility Study, the City began a rebranding and marketing evaluation, which resulted in a refreshed City logo and new branding guide. A marketing implementation plan will include a community and region-wide roll-out, regional advertising initiatives, and the redesign of City property and assets. This Downtown Wayfinding Project has integrated the updated logo, colors and brand guidance into the design of the new wayfinding signs.

This effort will establish a unified signage system which projects a consistent image, wayfinding that helps shape the identity of place, and contributes significantly toward the satisfaction of visitors and community pride among residents. By directing visitors off of the main arterials and easing them into the downtown core, the wayfinding system can economically activate the area for visitors and residents.



Burien magazine article



Updated City of Burien Brand Guide

1.0 INTRODUCTION

WHAT IS WAYFINDING?

Wayfinding signage guides people through a physical environment and enhances their understanding and experience of the place, guiding the user to specific destinations. It can be a network of signs that guides the user (vehicle, bicyclist, and/or pedestrian) to destinations such as municipal services, medical services, parking, parks and trails and other desired destinations. Wayfinding signage is intended as a visual communication system directing first time visitors, but can also help provide a sense of place, adding an aesthetic look and feel to the district with the use of color, symbols, fonts and other visual cues.

A wayfinding system for Downtown Burien will not only help navigate visitors from place to place, but will support the identity of Downtown as a special place.

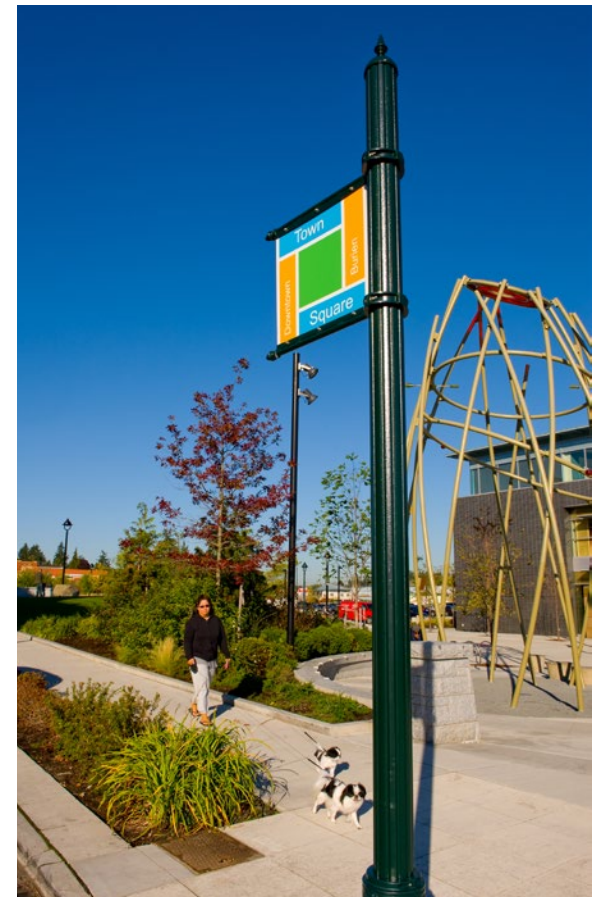
DOWNTOWN WAYFINDING SIGN GOALS

The following goals were identified and confirmed by City staff and the project advisory committee to establish an intent and focus for the Downtown's wayfinding program while supporting the Downtown Mobility Study's goals:

- Enhance Downtown's pedestrian environment
- Encourage place-making in Downtown Burien
- Support Downtown businesses
- Increase mobility Downtown, especially for alternative travel modes like walking and biking
- Attract potential development/investment/employers through a multi-modal travel environment, has a positive economic impact
- Direct vehicular traffic from highways into Downtown core
- Improve linkages to and within other areas of Downtown
- Make information more accessible to visitors and enhance the visitor's experience
- Direct vehicular traffic to available parking to encourage "park once - shop twice" behavior
- Incorporate the new logo and branding into the wayfinding design
- Build brand equity

WHAT MAKES GOOD WAYFINDING:

- » Legibility
- » Scale
- » Color
- » Placemaking / Aesthetics



existing Burien Town Square sign

OUTREACH PROCESS AND DESIGN APPROVAL

A Wayfinding Steering Committee (WSC) was formed to develop wayfinding sign types, specify sign destinations, assist with sign locations and develop the overall look and feel of the signage to reflect the desired character of Downtown Burien that complements the updated City logo and brand.

The WSC process consisted of (4) four meetings to develop design alternatives for the various sign types and information kiosk(s). The results of this work then helped establish the standard details for the Vehicular Directional Signage, Pedestrian/Bike Directional Signage, Public Parking Sign Type 1 and 2 and Information Kiosk.

In conjunction with the WSC process the downtown wayfinding project went through an approval process during (4) City staff coordination review meetings, (2) two public open houses, (1) one public online survey, and (2) two presentations to City Council.

SIGN DESIGN PARAMETERS

The intent of the sign design is to clearly direct users to identified Downtown destinations. It also provides a means to create a cohesive visual theme for Downtown through the character of the signs. In addition to this being a wayfinding effort, the signs should be a placemaking element that reflects the character of the community. The input from the Steering Committee and the public stated that the sign designs should be fun, colorful, incorporate a public art element, and incorporate the elements from the new City logo and branding guide.

The Steering Committee reviewed and discussed the proposed wayfinding sign concepts and agreed with the following parameters for the final sign design:

- **Vehicular Directional Signs should be legible for motorists (faster and slower speeds)**
- **Pedestrian/Bike Directional Signs should be legible for bicyclists and pedestrians**
- **Public Parking Signs should be legible for motorists (faster and slower speeds), bicyclists and pedestrians**
- **Information Kiosks should be adaptive, contain flexible information, be eye-catching from a distance and user-friendly to pedestrians**
- **All sign types should use the City logo / branding guide color palette as inspiration, but the colors can vary from the palette to provide appropriate color contrast for legibility and interest**
- **The type of destinations on each sign blade or panel should coordinate with its designated color categories**



public open house

2.0 DOWNTOWN DESTINATIONS

DOWNTOWN DESTINATIONS

The Wayfinding Steering Committee established a list of key destinations within and near the Downtown area. The following page (see figure 1) shows the various destination types, nomenclature, and location. The decision was made by the WSC to identify destinations that fall under the following categories, see figure 1: Parks (green), City & Civic (blue), Academic (light blue), and Local Attractions (orange). Each destination name was reviewed for length of text (to fit on the sign) and familiarity of the name/title as it is known in the community. If needed, some names were abbreviated to fit on the signs. These destinations were also reviewed by City staff and went through a public review process. There are a few exceptions to the rule in regards to the color designated destinations, such as, Parking and State Route destinations are to be light blue.

The majority of destinations are focused within the Urban Center Boundary, but a few destinations outside of the Urban Center Boundary were identified as a significant destination close to downtown and should be incorporated into the Downtown Wayfinding Plan. These destinations include (1) Seahurst Park, (2) Skateboard Park, (3) Dottie Harper Park, (6) Lake Burien School Park, (12) Community Center, (14) Soc Sec Admin, (19) Theater, and (26) Kennedy Cath. H.S.

"Dining and Shopping" were also added to the destination list to direct visitors to SW 153rd St where various options for dining and retail can be found. Public Parking was also identified as an important destination to direct visitors to.

It was decided by the WSC that medical centers and churches would not be included in this wayfinding plan. For hospitals, the standard blue "H" guide signs would remain, to direct people to nearby hospitals, as they are universally recognized. The WSC also determined that no individual businesses or organizations shall be identified on the wayfinding signs.

WHAT MAKES GOOD WAYFINDING:

- Sign Hierarchy
- Sign Content & Destinations
- Sign Aesthetics
- Sign Locations
- Frequency of Signs

2.0 DOWNTOWN DESTINATIONS

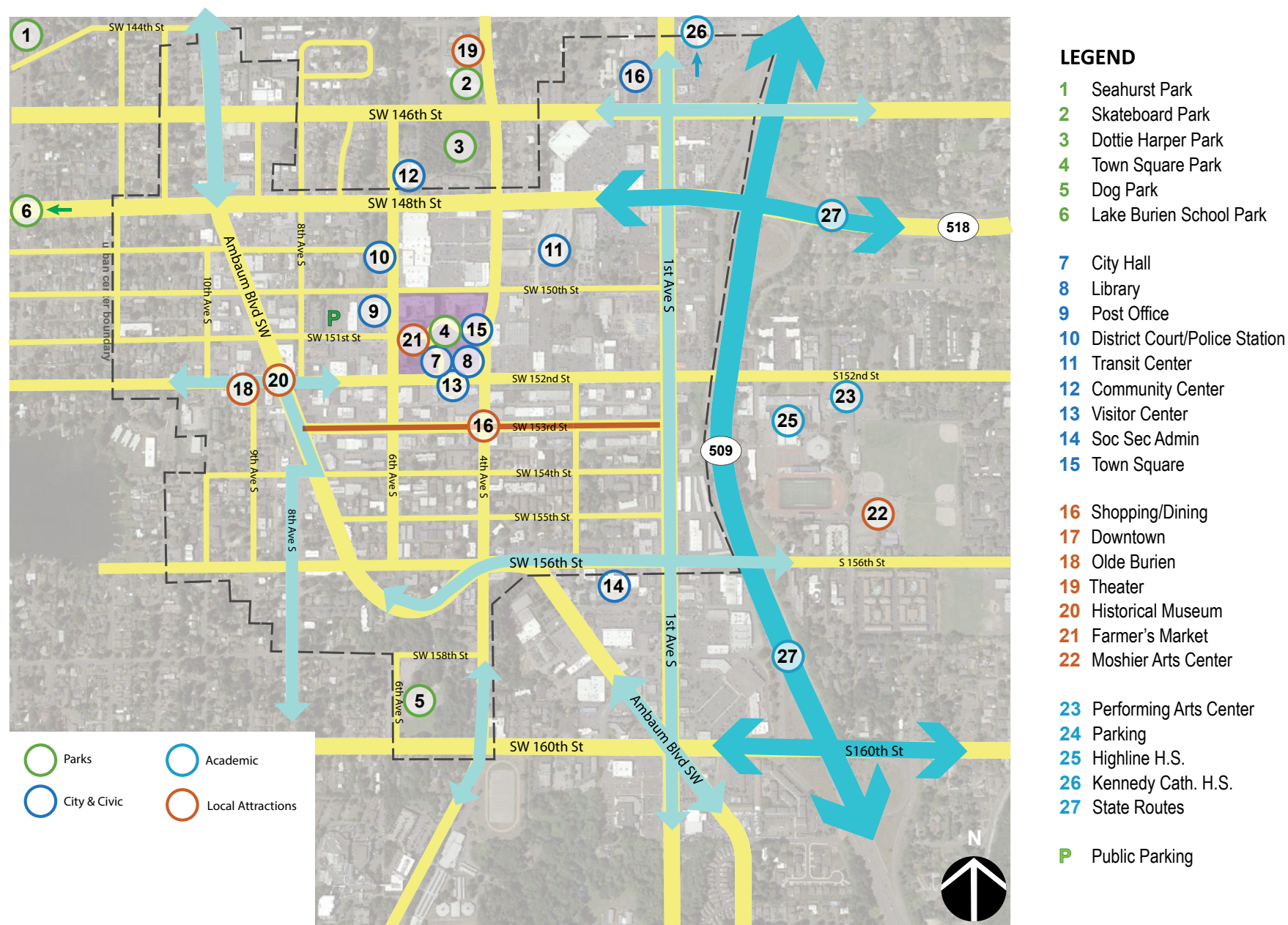


FIGURE 1 - downtown destinations plan

3.0 DOWNTOWN WAYFINDING

DOWNTOWN WAYFINDING SIGN LOCATIONS

Figure 2 below displays a diagrammatic layout of the signs, and sign type, of the Downtown wayfinding signs.

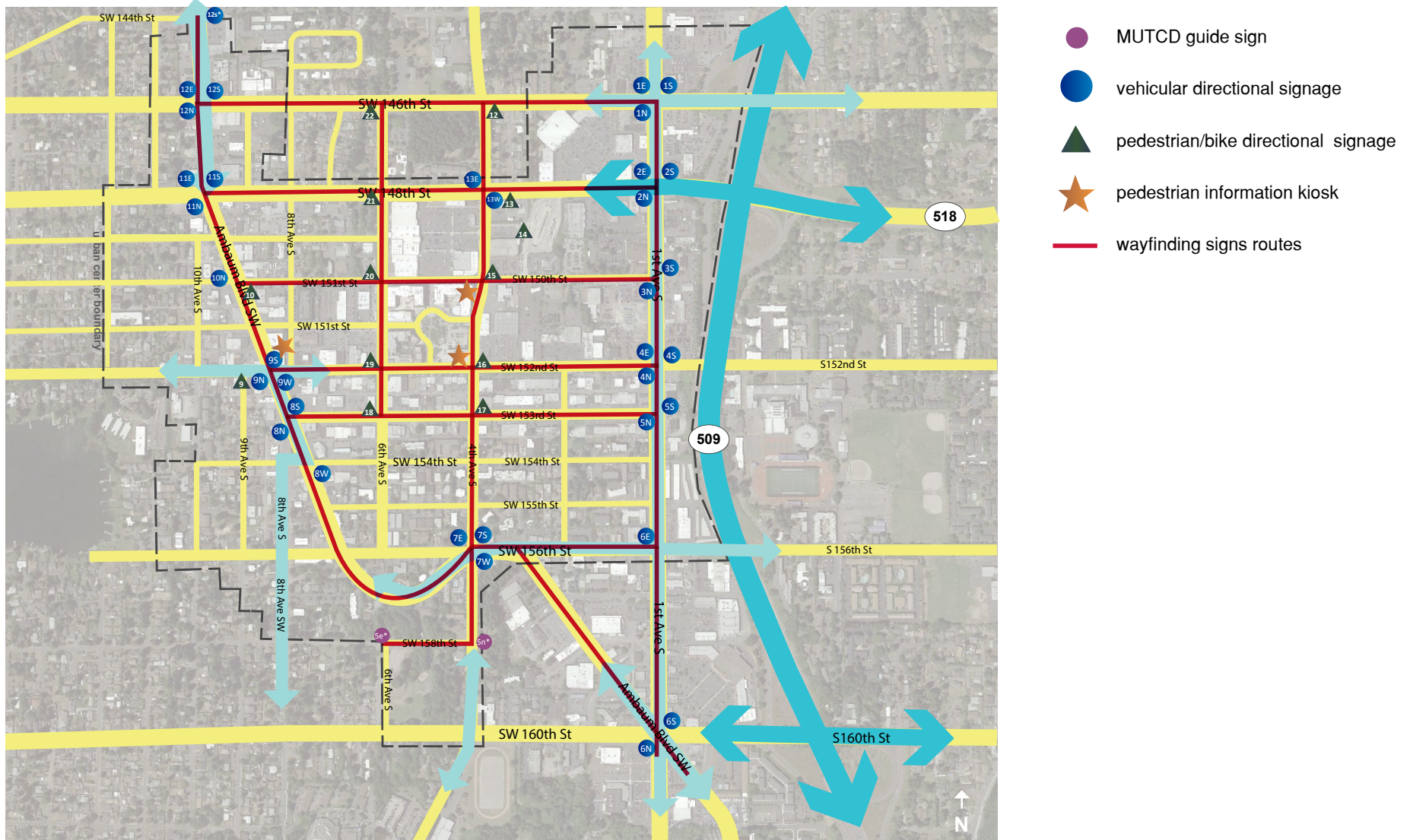


FIGURE 2 - downtown wayfinding sign locations plan

DOWNTOWN PUBLIC PARKING SIGN LOCATIONS

Figure 3 below displays a diagrammatic layout of the public parking sign type 1, type 2 and signs to parking on vehicular directional signs.

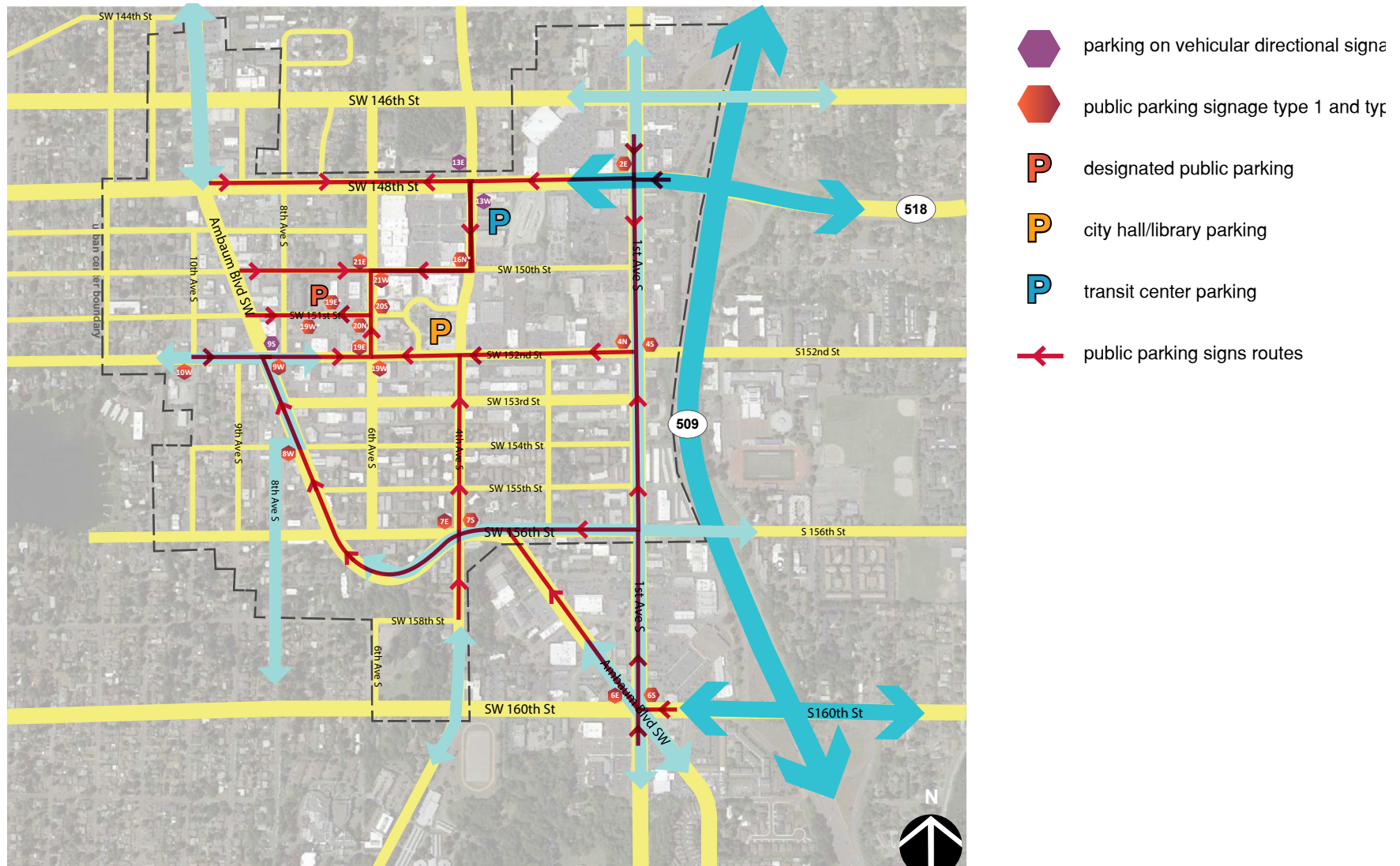


FIGURE 3 - public parking sign locations plan

4.0 WAYFINDING SIGN TYPES AND STANDARDS

DOWNTOWN WAYFINDING SIGN HIERARCHY

The Downtown Wayfinding Sign Plan incorporates a hierarchy of three sign types; pedestrian/bike directional signage, vehicular directional signage and pedestrian information kiosks.

PEDESTRIAN/BIKE DIRECTIONAL SIGNAGE

The pedestrian/bike directional signs will be installed within the core area of downtown, directing both slower moving vehicular traffic, pedestrians and bicyclists to their destination(s). These signs can be read from a vehicle at slower speeds, on a bike, or by foot.

Each sign pole contains multiple blades with destinations pointing towards in the direction of the destination. The destination blades shall be double-sided with mirrored graphic on the other side. Destination blades shall be one consistent uniform color per color-categorized destinations list (see figure 4). Refer to the Sign Location Matrix (appendix C) for sign location, content, logo graphics and special remarks on installation.

The need for public art to be integrated into the sign pole led to an unconventional wayfinding sign installation. The sign foundation, sign support, fasteners and removable collar and cap shall require further structural engineering and design. The structural engineer shall provide maximum weight, wind-load and proper attachment details for public art element. The artist must acquire an installation template from the kiosk manufacturer to ensure proper connections to the pole top prior to the public art fabrication.

Sign pole shall be located for proper sign placement location on site per WSDOT Standard Plan G-20.10.02. All signs shall be located with proper clearance vertically and horizontally. Sign locations shown on figure 3 are diagrammatic. It is critical that proper site placement and checking for underground utility prior to sign pole and foundation installation.

Electronic file for destination blade and wave banner blade graphics shall be provided by City upon Contractor's request prior to sign fabrication.

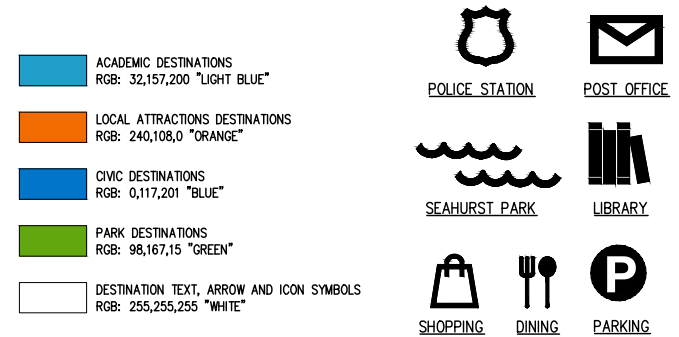


FIGURE 4 - destination icons and blade colors

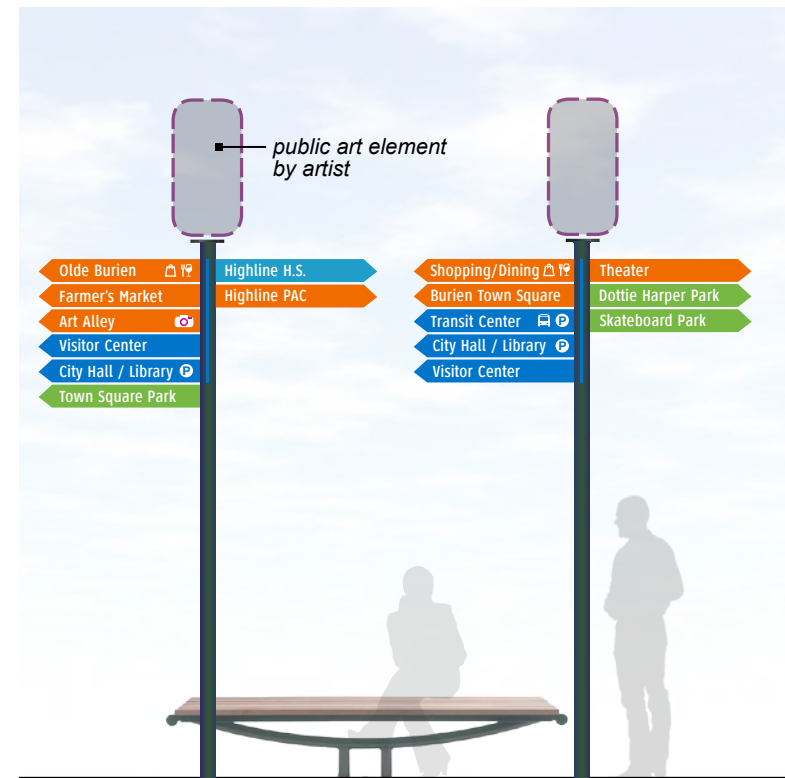


FIGURE 5 - pedestrian/bike directional signage elevations

4.0 WAYFINDING SIGN TYPES AND STANDARDS

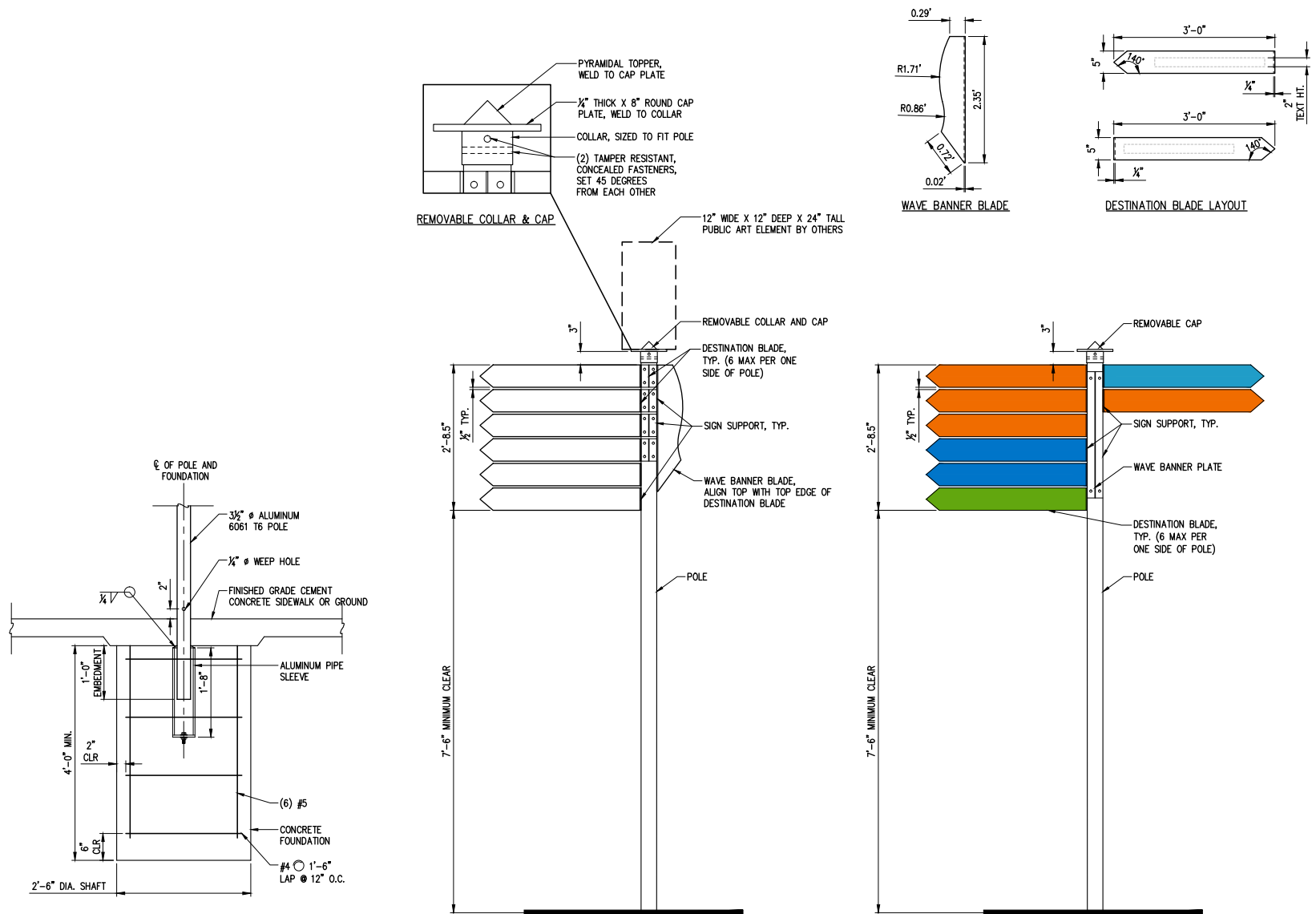


FIGURE 6 - pedestrian/bike directional signage standard details

4.0 WAYFINDING SIGN TYPES AND STANDARDS

VEHICULAR DIRECTIONAL SIGNAGE

The vehicular-scaled signs will be installed at the perimeter of the downtown core along 1st Ave. S, Ambaum Blvd SW, and SW 148th St., capturing vehicular traffic coming from the City's main arterials as well as from SR 509 and SR 518.

Vehicular Directional sign blades shall be single-sided mounted on existing signal poles, existing roadway pole and/or new pole with concrete foundations.

Refer to WSDOT Standard Plan G-20.10.02 for proper sign placement on existing signal poles, existing roadway pole and/or new poles.

Vehicular directional signage on new poles shall require further structural engineer for cement concrete foundations, bolt attachments to foundations, sign stiffeners and fasteners.

Electronic file for sign graphics shall be provided by City upon Contractor's request prior to sign fabrication.



FIGURE 7 - icons and colors



FIGURE 8 - vehicular directional signage

4.0 WAYFINDING SIGN TYPES AND STANDARDS

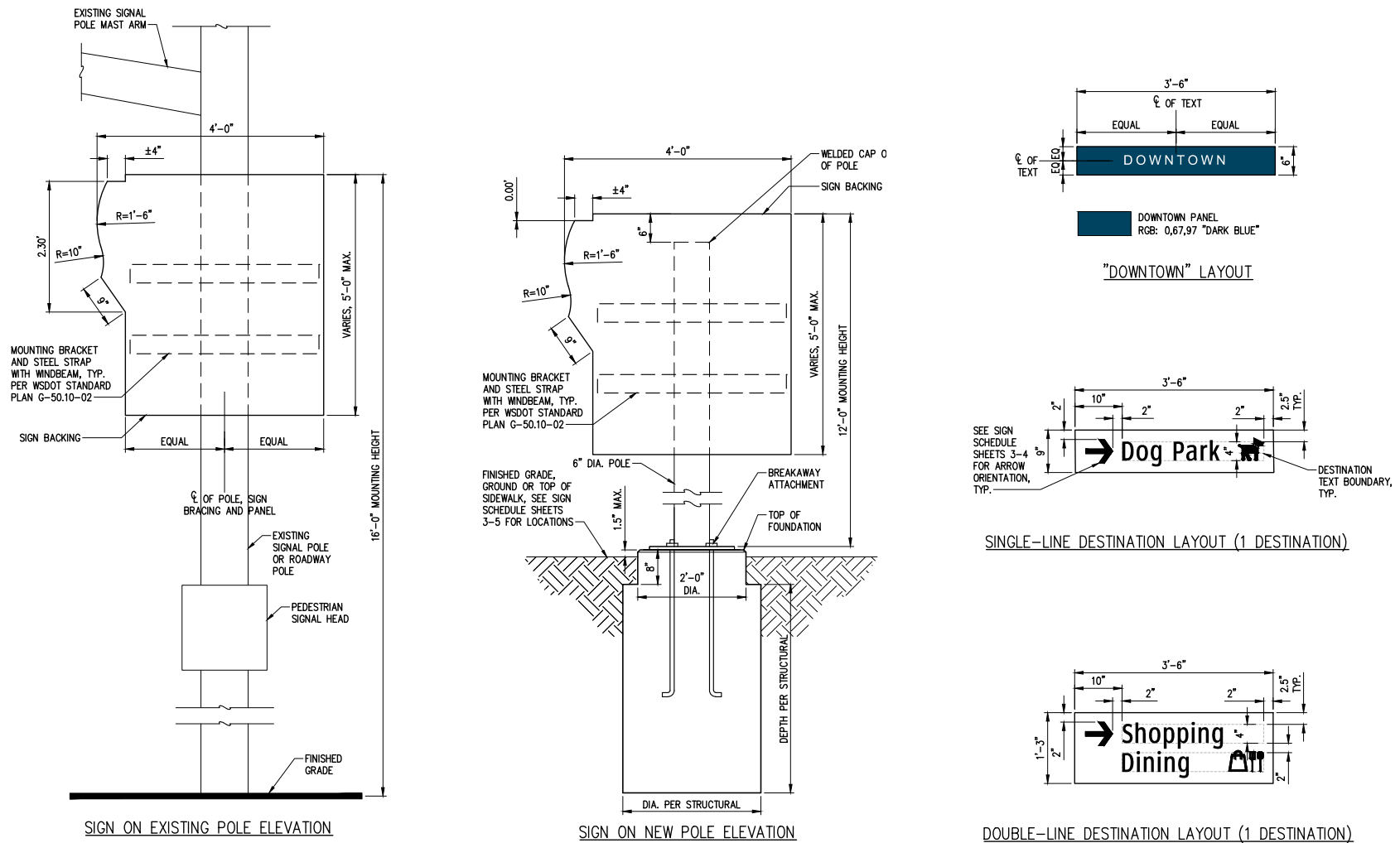


FIGURE 9 - vehicular directional signage standard details

4.0 WAYFINDING SIGN TYPES AND STANDARDS

PEDESTRIAN INFORMATION KIOSK

Three (3) pedestrian informational kiosks are proposed within the downtown core. Two will replace existing kiosks, one located at the edge of Olde Burien and the other just outside of City Hall/Library at Burien Town Square. The third kiosk has been located to capture visitors arriving to town from the Transit Center, at the corner of 4th Ave. SW and SW 150th St. The new digital pedestrian information kiosks (see figure 10) will be installed in later phases. For better usability from the (2) two existing kiosks, during the interim phase, these kiosks will be retrofitted with a larger information panel containing the new downtown map. This will be accomplished by attaching protected high pressure laminate panels to the existing kiosk structures. The sign graphic for the downtown map panel will be developed by the City.

Future phases will include new outdoor-rated digital kiosks, replacing the older brick ones at Olde Burien and Town Square and the display case one at 4th Ave. SW and SW 150th St. The new digital kiosks will have nice brightly-lit screens which will have more visual impact, be adaptive, flexible and more user-friendly. The digital screens have the ability to be easily updated and provided in multiple languages.

Since it was determined that no individual businesses or organizations will be identified on the wayfinding signs there is a possibility to integrate more information from private investors into the kiosk instead. One potential opportunity discussed, was to incorporate participating groups and businesses into the digital screen displays.

Each new digital pedestrian information kiosk will contain dual-sided information on high bright 42" screens of 2000cd/m2. Each kiosk is a complete unit when brought on site, including a UL-listed watertight enclosure fitted to accommodate an AC unit that ensures the screens and all associated computer hardware inside is at the appropriate functioning temperature. The digital kiosk shall also require cable and electrical access on site for installation.

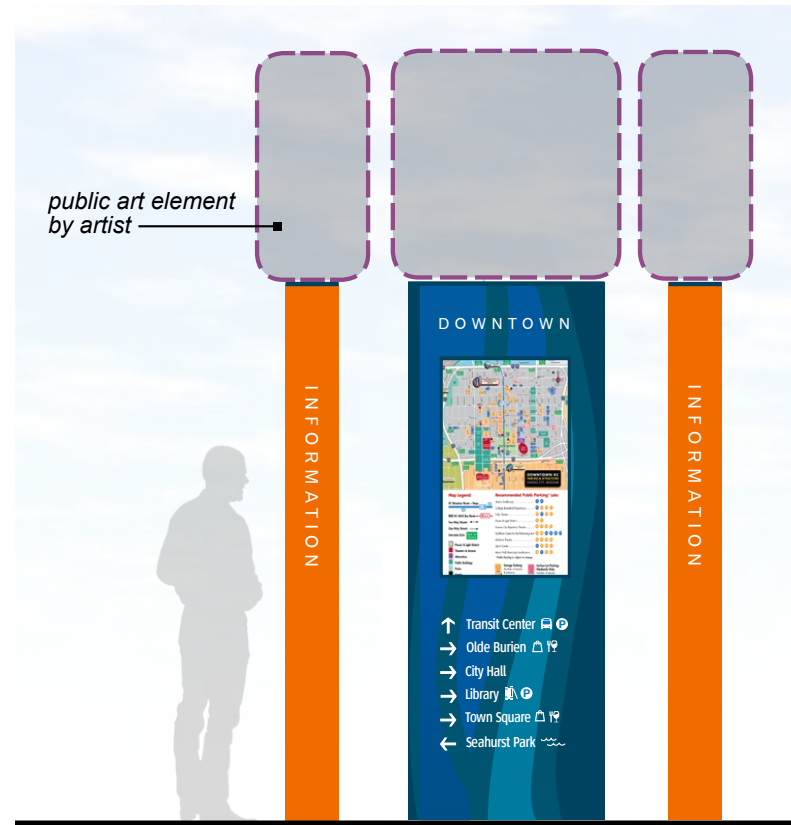


FIGURE 10 - digital pedestrian information kiosk elevation

4.0 WAYFINDING SIGN TYPES AND STANDARDS

There is also a need for public art (approximately 12" deep x 24" tall x 24" wide) to be integrated on top of the kiosk. The metal frame within the case enclosure will require further design development to structurally support a public art element on top.

The artist must acquire an installation template to ensure proper connections to the digital kiosk top prior to the public art fabrication. The City's art commission will lead the artist selection and installation process.

DIGITAL PEDESTRIAN INFORMATION KIOSK SPECIFICATIONS

Kiosk Manufacturer/Supplier: ProEnc

Contact Person: Graham Gallagher

Phone: (862) 234-5981

Application: Outdoor

Panel Size: 42" LCD

Max Resolution: 1920 x 1080

Viewing Angle: 178° / 178°

Pixel Pitch: 0.12125*0.36375 mm

Color: 16.7M

Contrast Ratio: 2000:1

Brightness: 2000cd/m2

Response Time: 5MS

Input Voltage: AC100-240V; 50-60HZ

Material: Metal / Aluminum case+Tempered glass panel

Operating system: Android or Windows

Information system software: Easy to operate background management

Customized logo: Silk printing / sticker / fluorescence optional

Network: WIFI / LAN / 3G / 4G optional

Play mode: Circulation/timing/ inter-cutting

Warranty: 2 years



examples of public art elements courtesy of Google images and KPG photos



digital pedestrian information kiosk by Pro Enc

4.0 WAYFINDING SIGN TYPES AND STANDARDS

PUBLIC PARKING

Public parking was determined as a priority destination for the downtown wayfinding signage network. There are two public parking lots in downtown, they are identified on page 7, figure 4. Directing vehicular traffic to available parking and encouraging them to park, walk, and discover downtown is a primary goal identified in the Mobility Study. Providing easy direction and access to parking will help encourage "park once - shop twice" behavior, supporting downtown economic vitality.

The downtown wayfinding sign plan provides a combination of "Public Parking" signs and "P" icons on the signage to direct vehicular traffic to parking for the Burien City Hall and downtown Library parking lot. Signage directing visitors to the King County Metro Burien Transit Center also includes a "P" icon for parking at the Transit Center. The City currently has "City of Municipal Parking" signs throughout downtown. It is recommended that in future phases of implementing the Downtown Wayfinding signage network, these signs be replaced by signs that reflect the new wayfinding style, including the updated City logo and wayfinding color palette and fonts. See figure 11 for an example of what the updated parking sign could look like. There is also the opportunity to provide additional public parking in the evenings. If the City coordinates with private properties that don't need to utilize their parking after business hours or during the weekends, signs could be installed that provide public parking hours, ie. evening or weekend days/hours. See figure 12 for an example.



existing Municipal Parking sign



FIGURE 11- public parking lot sign concept



FIGURE 12 - special hours public parking concept



FIGURE 13- public parking sign type 1 and 2 elevations

4.0 WAYFINDING SIGN TYPES AND STANDARDS

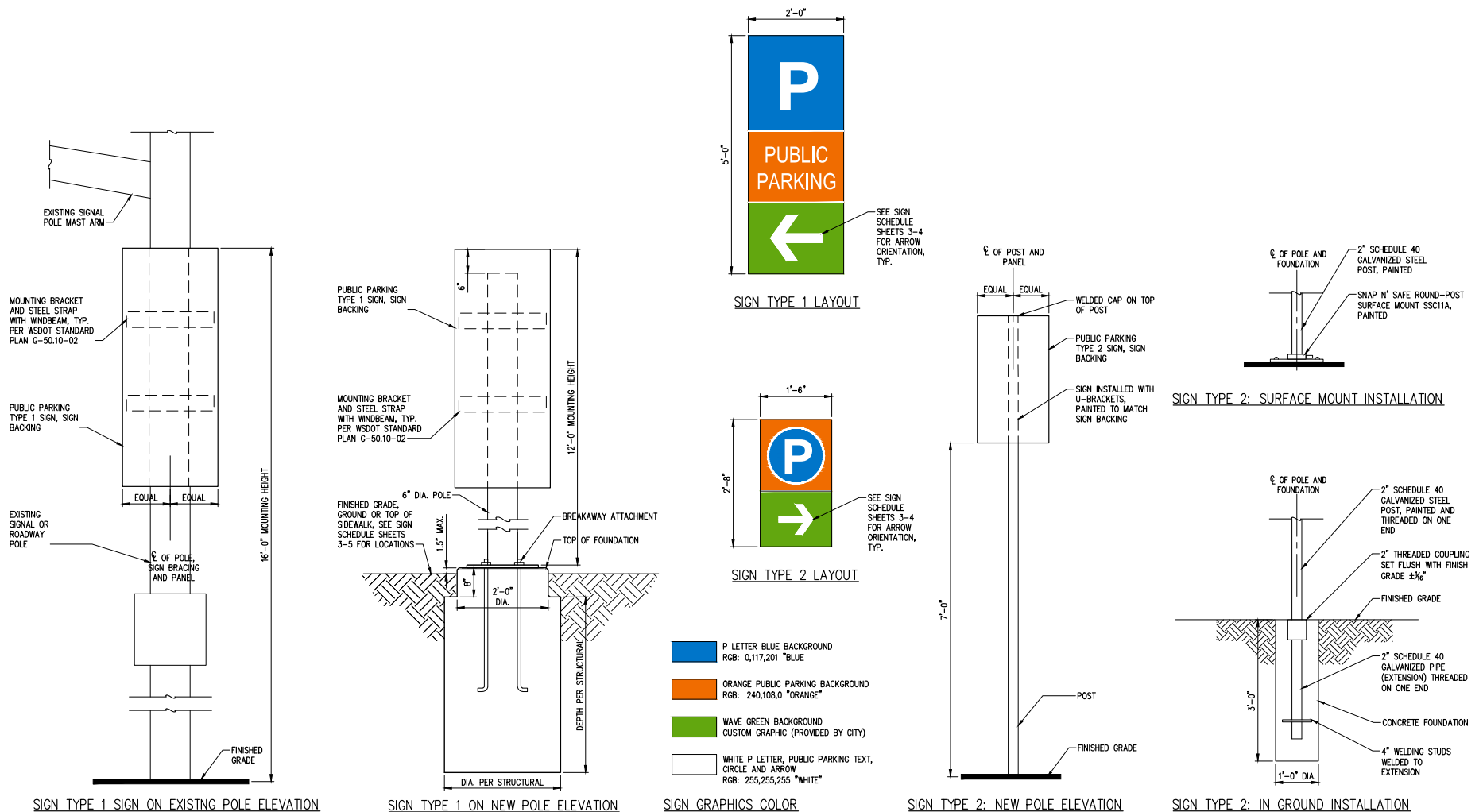


FIGURE 14- public parking sign type 1 and 2 standard details

5.0 PHASING & IMPLEMENTATION

FUTURE PHASES

This document addresses the sign design and network with a focus on Downtown Burien, which will be implemented in two (2) construction phases. Opportunities for additional future phases of the wayfinding signage design could be incorporated into a City-wide wayfinding network, or per each commercial district. The wayfinding sign types and designs can be utilized to expand the sign network into other Burien commercial districts, with minimal design effort. For example, in place of "Downtown" at the top of the signage, the specific neighborhood, ie. "Boulevard Park" or "Manhattan" could be identified. The same signage types and color palette could be utilized, or be modified, depending on the district's needs. The addition of art to the pedestrian/bike directional signage or kiosk could also be incorporated, unique to the district. Implementation of this future phase, including identification of sign locations and destinations, would be dependent on the work of a separate steering committee and consultant at a later date.

APPENDICES

Appendix A: Existing Signage

Existing Gateway Signage
Existing District and Information Signage
Existing Guide Sign Inventory

Appendix B: Preliminary Wayfinding Concepts

WSC Meeting	February 2, 2017
WSC Meeting	March 2, 2017
Public Open House	March 16, 2017
WSC Meeting	April 6, 2017
Online Survey	April 13, 2017
WSC Meeting	May 4, 2017

Appendix C: Phase 1 & 2 Sign Location Plan & Matrices

Phase 1	Wayfinding Sign Location Plan
Phase 1	Public Parking Sign Location Plan
Phase 1	Sign Location Matrix
Phase 2	Wayfinding Sign Location Plan
Phase 2	Public Parking Sign Location Plan
Phase 2	Sign Location Matrix

Appendix D: Applicable WSDOT Standard Details

Standard Plan G-20.10-02: Ground-Mounted Sign Placement
Standard Plan G-50.10-02: Sign Bracing

this page is intentionally left blank

The Downtown area already has a variety of district and wayfinding signage. The existing signage includes standard City/MUTCD directional wayfinding signs, district signage for Burien Town Square and Olde Burien, City of Burien gateway sign, and a Downtown gateway arch (currently being reconstructed).

EXISTING GATEWAY SIGNAGE

There is an existing gateway sign at 1st Ave. S and SR 518/SW 148th St. There was also an arched gateway sign for Downtown Burien on SW 152nd St, just past 1st Avenue S, but was is currently being reconstructed due to damage to the sign. The City is currently working on replacing the gateway sign in kind at the same location.



existing gateway sign at 1st Ave. S and SR 518/SW 148th St.



existing gateway arch at SW 152nd St.



APPENDIX A: EXISTING SIGNAGE

EXISTING DISTRICT AND INFORMATION SIGNAGE

Throughout Downtown, various district signs and information kiosks have been installed. The following are photo examples of these signs:



Burien Town Square district sign



Olde Burien district sign



SW 152nd St & 8th Ave SW kiosk



SW 152nd St & 8th Ave SW kiosk



SW 150th St & 4th Ave SW information kiosk

APPENDIX A: EXISTING SIGNAGE



photo examples of existing MUTCD guide signs in Burien

APPENDIX A: EXISTING SIGNAGE

DOWNTOWN EXISTING GUIDE SIGN LOCATIONS

Figure 15 below displays a diagrammatic inventory of the guide signs installed around Downtown.

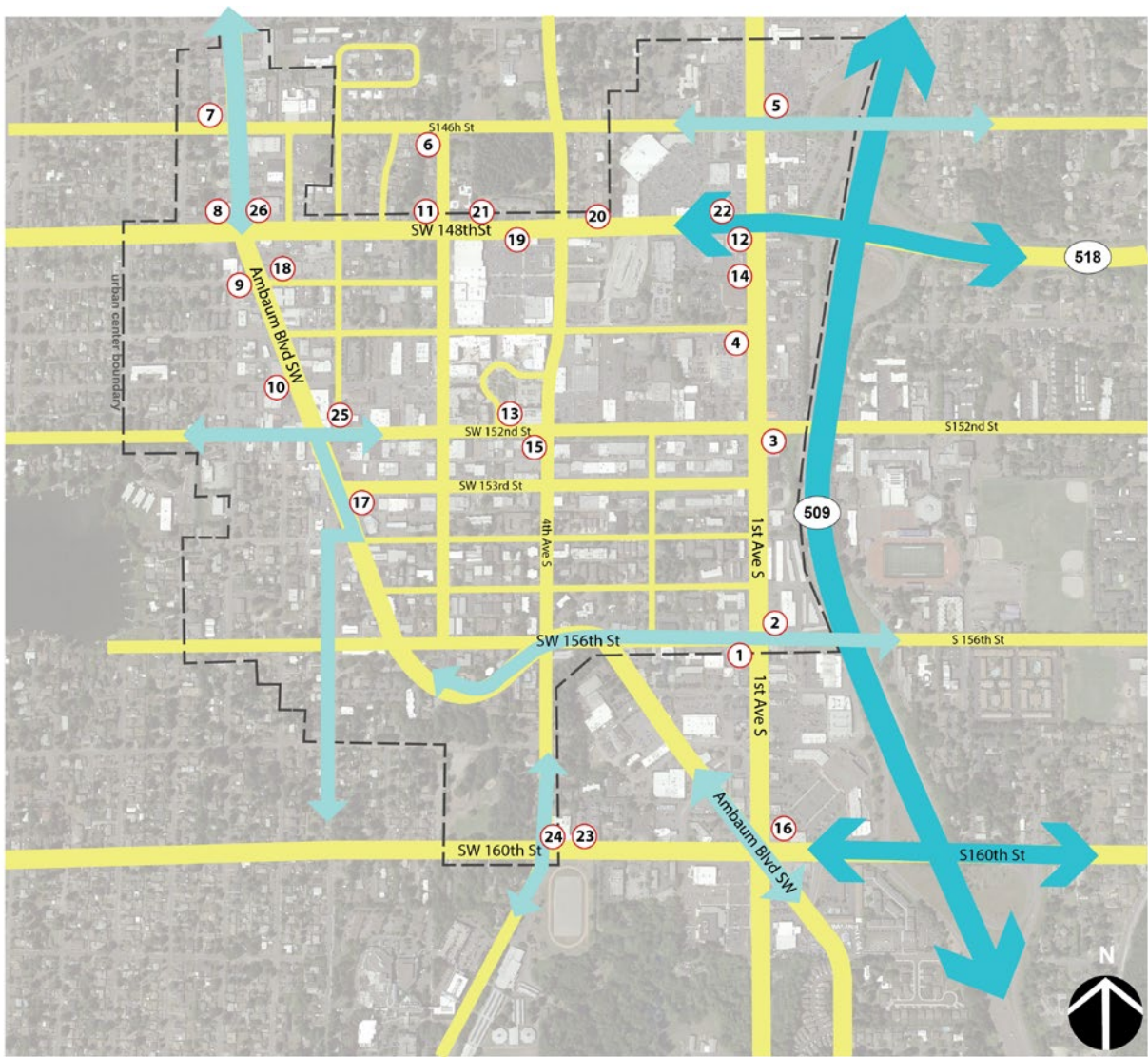


FIGURE 15- guide sign location plan

APPENDIX A: EXISTING SIGNAGE



MOSHIER COMMUNITY ART CENTER (E)
HIGHLINE SCHOOL DISTRICT E.R.A.C. (W)



FREE METHODIST CHURCH (E)
HIGHLINE HIGH SCHOOL (E)



FREE METHODIST CHURCH (E)
HIGHLINE HIGH SCHOOL (E)



BURIEN HONDA (E)



BURIEN COMMUNITY CENTER (W)



BURIEN COMMUNITY CENTER (S)



BURIEN COMMUNITY CENTER (E)
SEAHURST PARK (W)



LAKE BURIEN SCHOOL PARK (W)
SEAHURST PARK (N)



EAGLE LANDING PARK (W)



LAKE BURIEN PRESBYTERIAN CHURCH (W)



BURIEN COMMUNITY CENTER (S)
DISTRICT COURTS (N)



BURIEN PUBLIC LIBRARY (W)
BURIEN COMMUNITY CENTER (W)



LIBRARY (E)
BURIEN CITY HALL (E)



LIBRARY (S)
BURIEN CITY HALL (S)



LIBRARY (W)
BURIEN CITY HALL (W)



HOSPITAL (S)



LIBRARY (N)
BURIEN CITY HALL (N)



DISTRICT COURTS (E)

APPENDIX A: EXISTING SIGNAGE



LIBRARY (S)
BURIEN CITY HALL (S)



LIBRARY (W)
BURIEN CITY HALL (W)



POLICE DEPARTMENT (S)



POLICE DEPARTMENT (W)



HOSPITAL (S)



LIBRARY (N)
BURIEN CITY HALL (N)



MUNICIPAL PARKING (W)



SEAHURST PARK (N)
HOLY REDEEMER CHAPEL (N)

APPENDIX B: PRELIMINARY WAYFINDING CONCEPTS

WSC MEETING FEBRUARY 2, 2017
PUBLIC OPEN HOUSE MARCH 16, 2017

Concept A



vehicular directional signage

- provides general direction to key destinations
- mounted on new poles or existing roadway/signal poles
- located on major arterial roads
- seen from speeds greater than 35 mph

pedestrian/bike directional signage

- ▲ located at decision-making points
- ▲ primarily legible for users moving in slower traffic
- ▲ directs pedestrians and bicyclists to destinations around downtown

pedestrian information kiosk

- ★ located at key locations where larger groups of users can gather information about downtown
- ★ accompanied by other place-making elements (i.e. decorative pavement, seating, public art, landscape, etc.)
- ★ 3D public art sculpture mounted on top

public parking signage

- ◈ located at decision-making points
- ◈ directs drivers to public parking from arterial and local roads

APPENDIX B: PRELIMINARY WAYFINDING CONCEPTS

WSC MEETING FEBRUARY 2, 2017

PUBLIC OPEN HOUSE MARCH 16, 2017

Concept B



vehicular directional signage

- provides general direction to key destinations
- mounted on new poles or existing roadway/signal poles
- located on major arterial roads
- seen from speeds >35 mph
- public art banners attached to side

pedestrian/bike directional signage

- ▲ located at decision-making points
- ▲ primarily legible for users moving in slower traffic
- ▲ directs pedestrians and bicyclists to destinations around downtown
- ▲ 3D public art finial on top

pedestrian information kiosk

- ★ located at key locations where larger groups of users can gather information about downtown
- ★ accompanied by other place-making elements (i.e. decorative pavement, seating, public art, landscape, etc.)
- ★ 3D public art sculpture mounted on top
- ★ 2D graphic panel on side

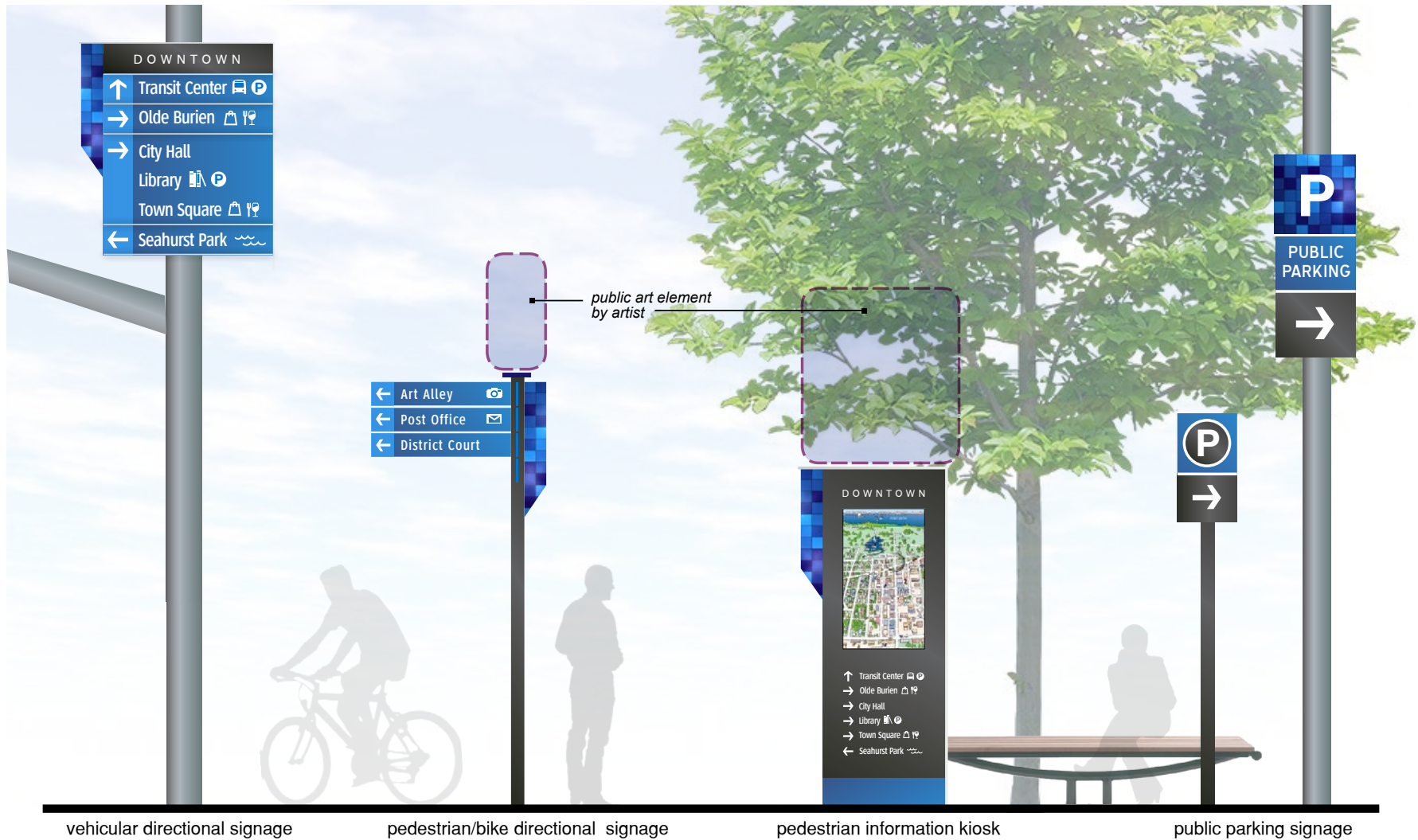
public parking signage

- ◈ located at decision-making points
- ◈ directs drivers to public parking from arterial and local roads

APPENDIX B: PRELIMINARY WAYFINDING CONCEPTS

WSC MEETING APRIL 6, 2017

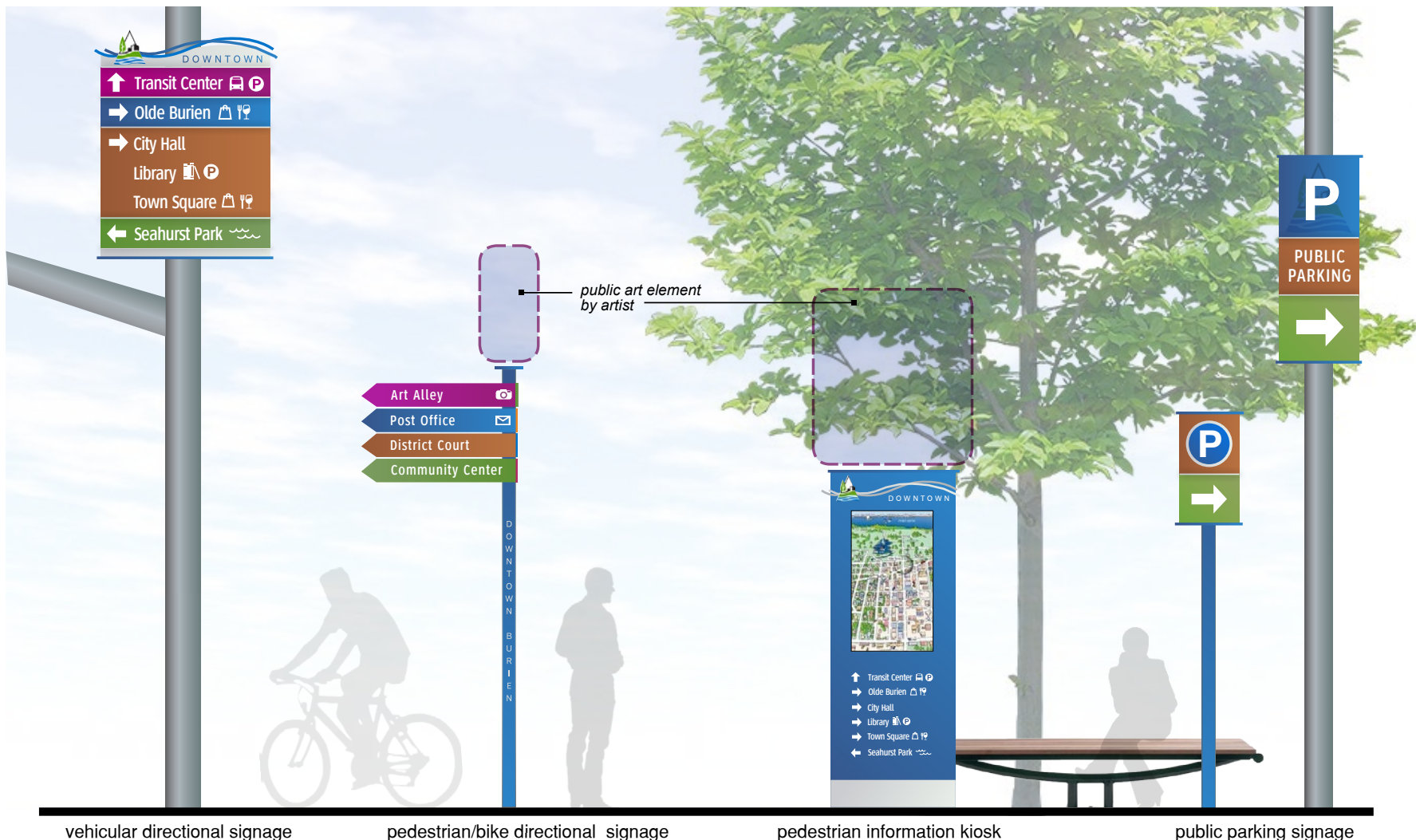
Concept A



APPENDIX B: PRELIMINARY WAYFINDING CONCEPTS

WSC MEETING APRIL 6, 2017

Concept B



vehicular directional signage

pedestrian/bike directional signage

pedestrian information kiosk

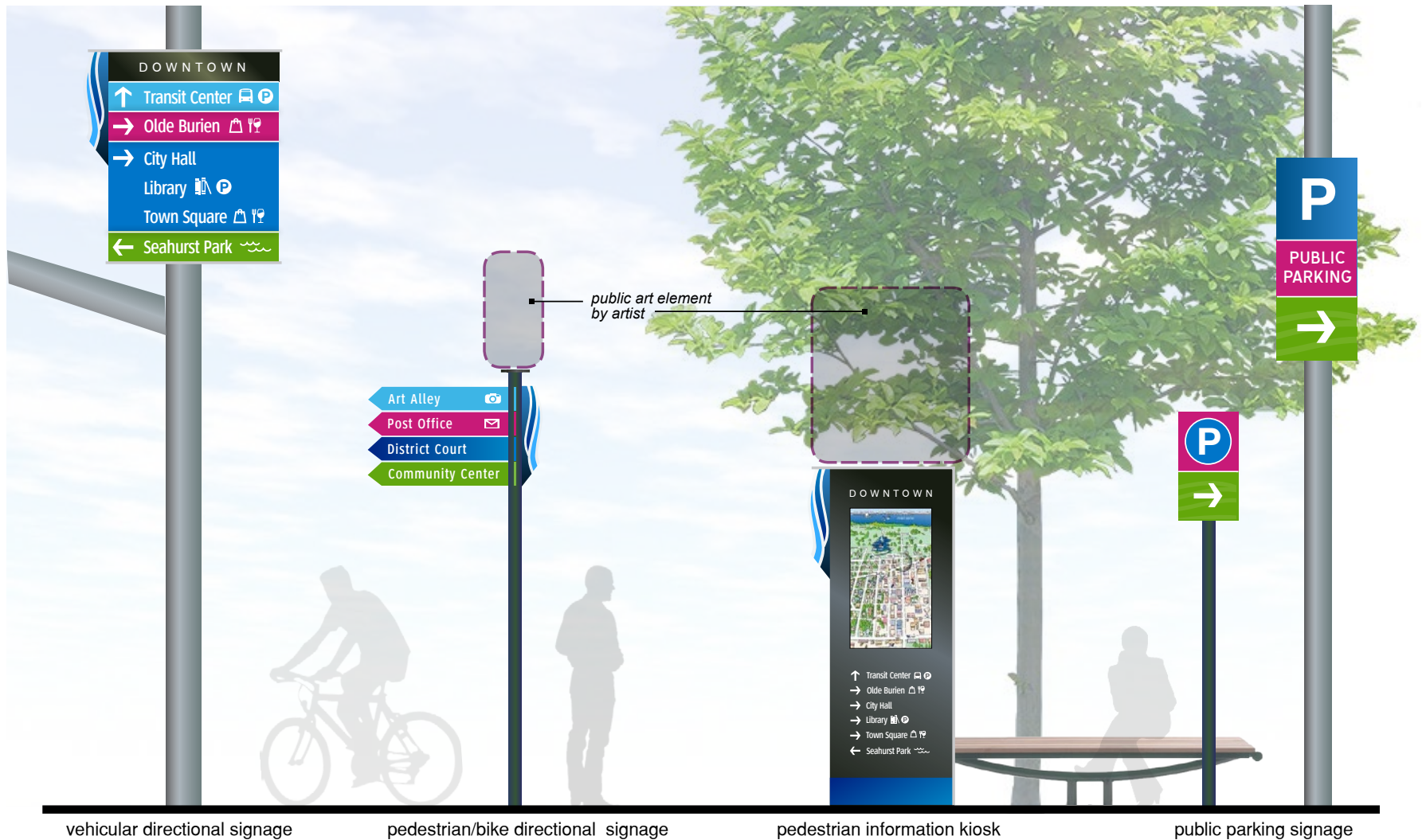
public parking signage

APPENDIX B: PRELIMINARY WAYFINDING CONCEPTS

WSC MEETING APRIL 6, 2017

ONLINE SURVEY MATERIAL APRIL 13, 2017

Concept A



APPENDIX B: PRELIMINARY WAYFINDING CONCEPTS

WSC MEETING APRIL 6, 2017

ONLINE SURVEY MATERIAL APRIL 13, 2017

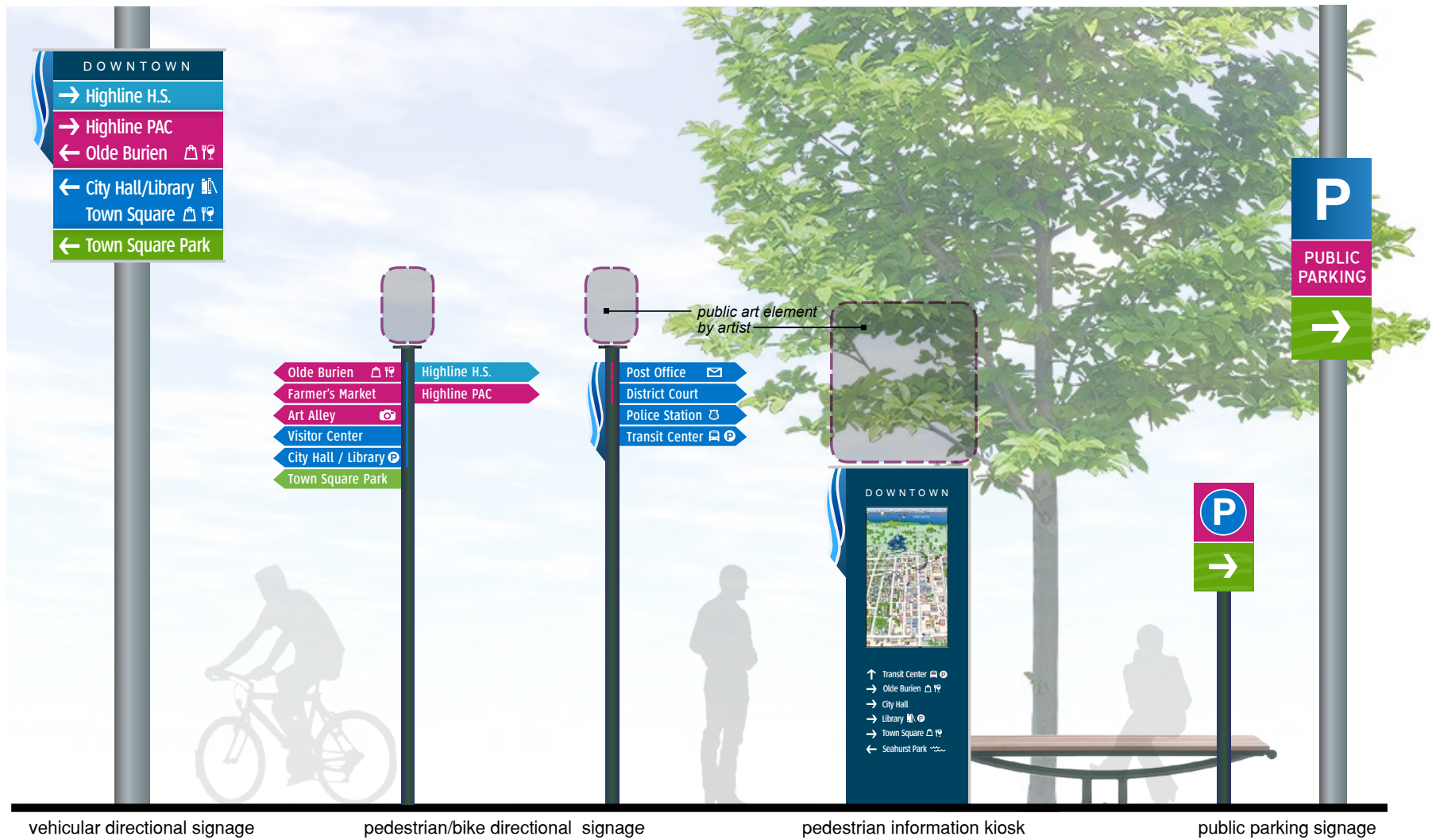
Concept B



APPENDIX B: PRELIMINARY WAYFINDING CONCEPTS

WSC MEETING MAY 4, 2017

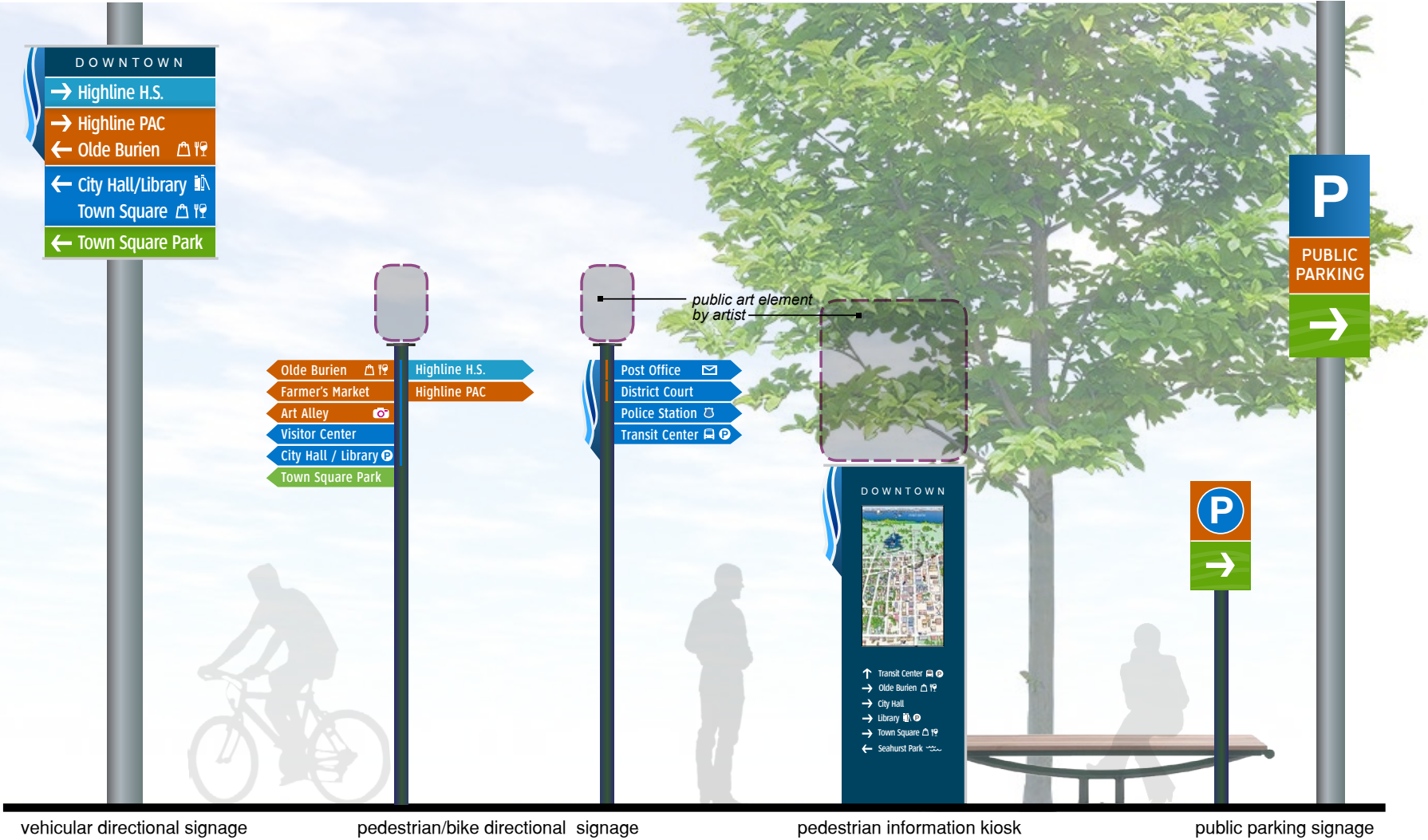
Concept A - Color Scheme 1



APPENDIX B: PRELIMINARY WAYFINDING CONCEPTS

WSC MEETING MAY 4, 2017

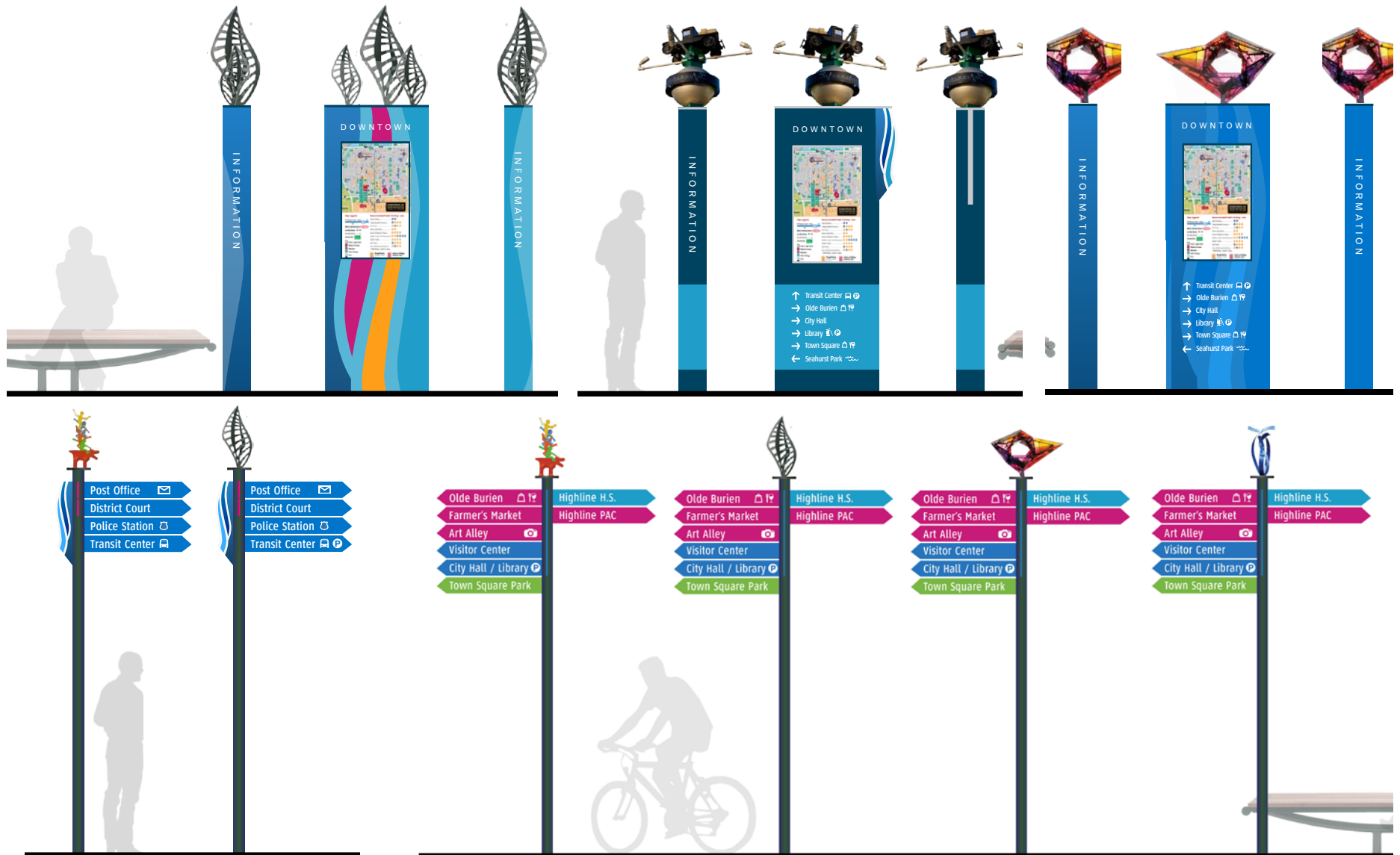
Concept A - Color Scheme 2



APPENDIX B: PRELIMINARY WAYFINDING CONCEPTS

WSC MEETING MAY 4, 2017

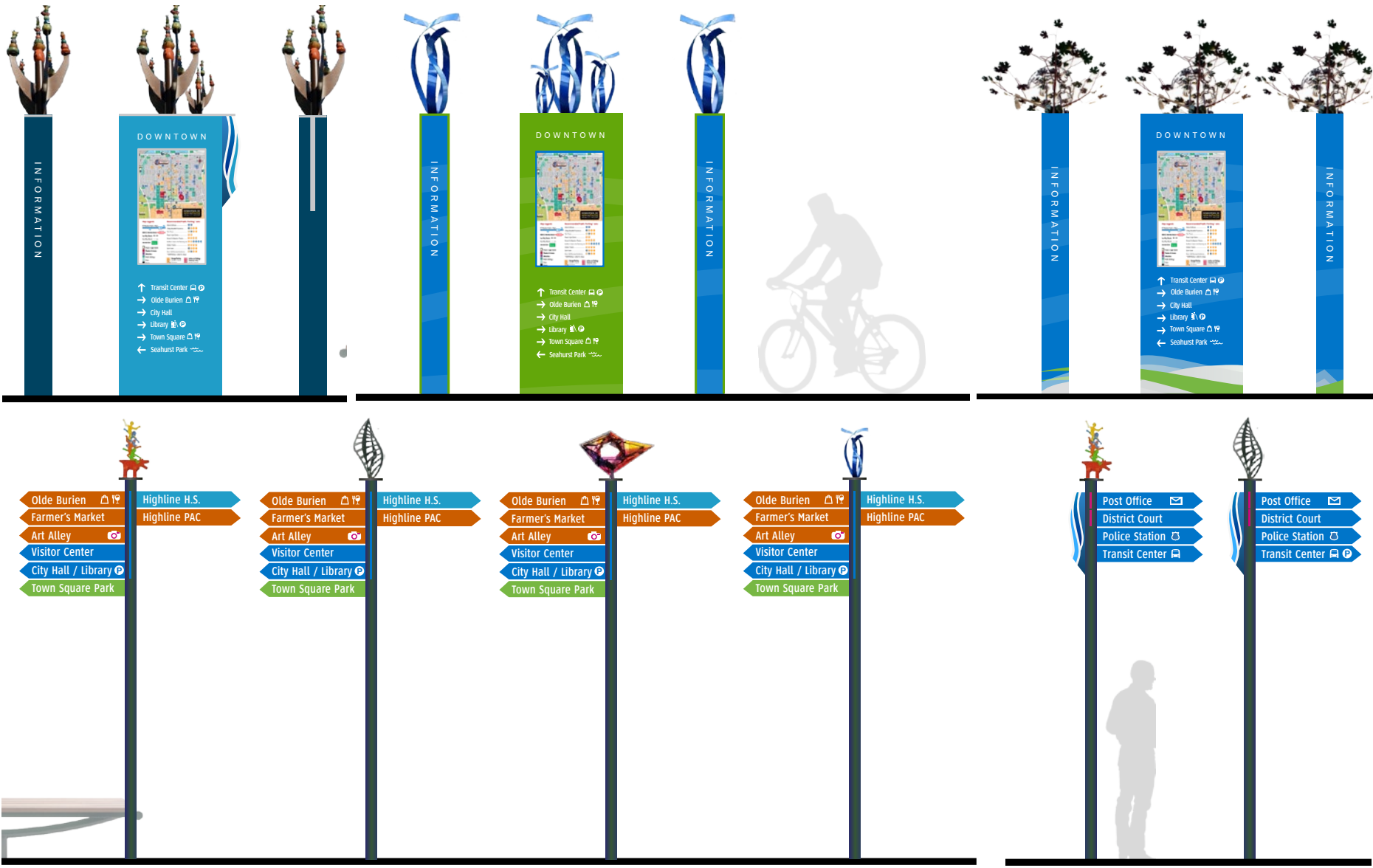
Concept A - Color Scheme 1



APPENDIX B: PRELIMINARY WAYFINDING CONCEPTS

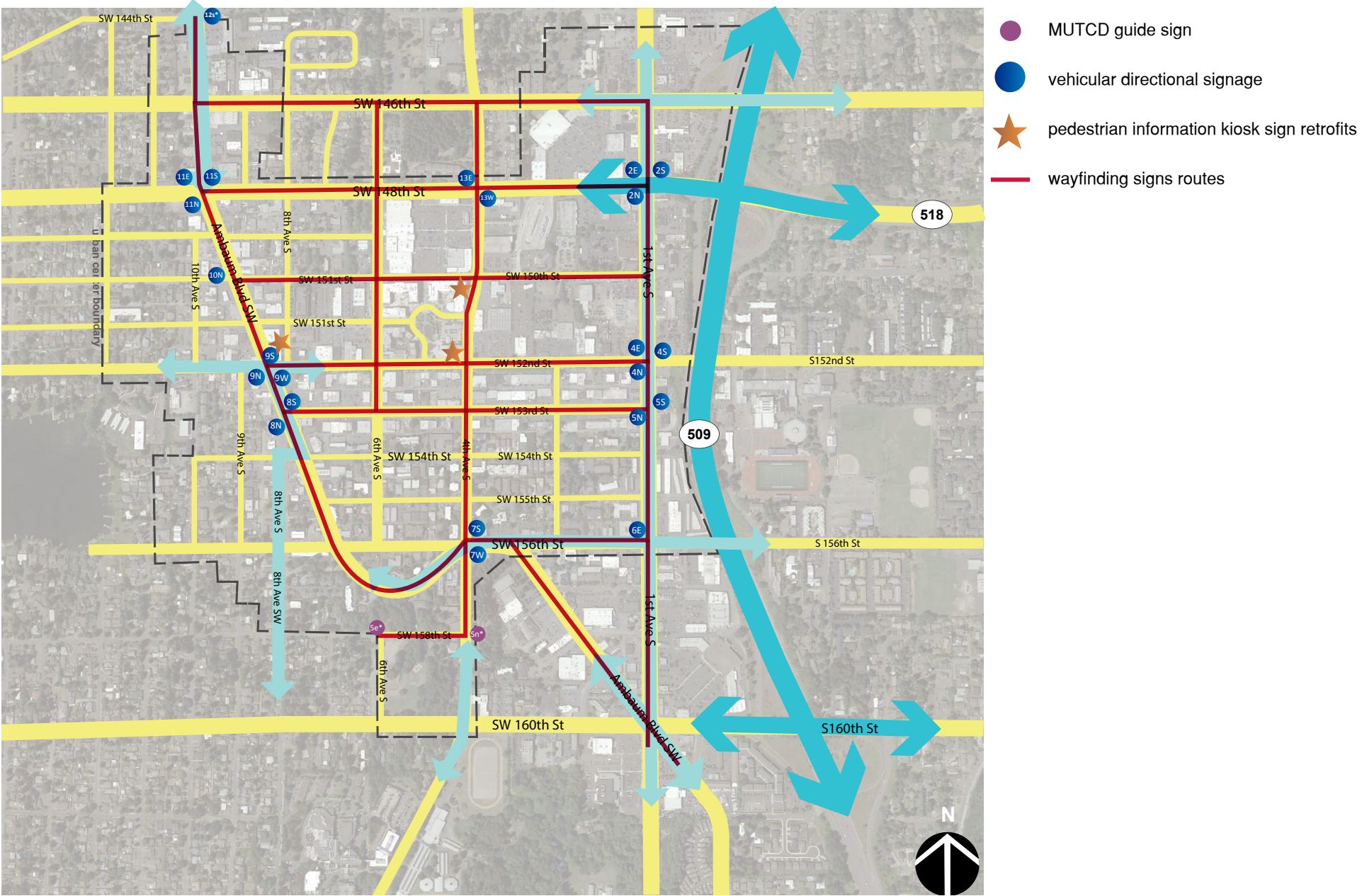
WSC MEETING MAY 4, 2017

Concept A - Color Scheme 2

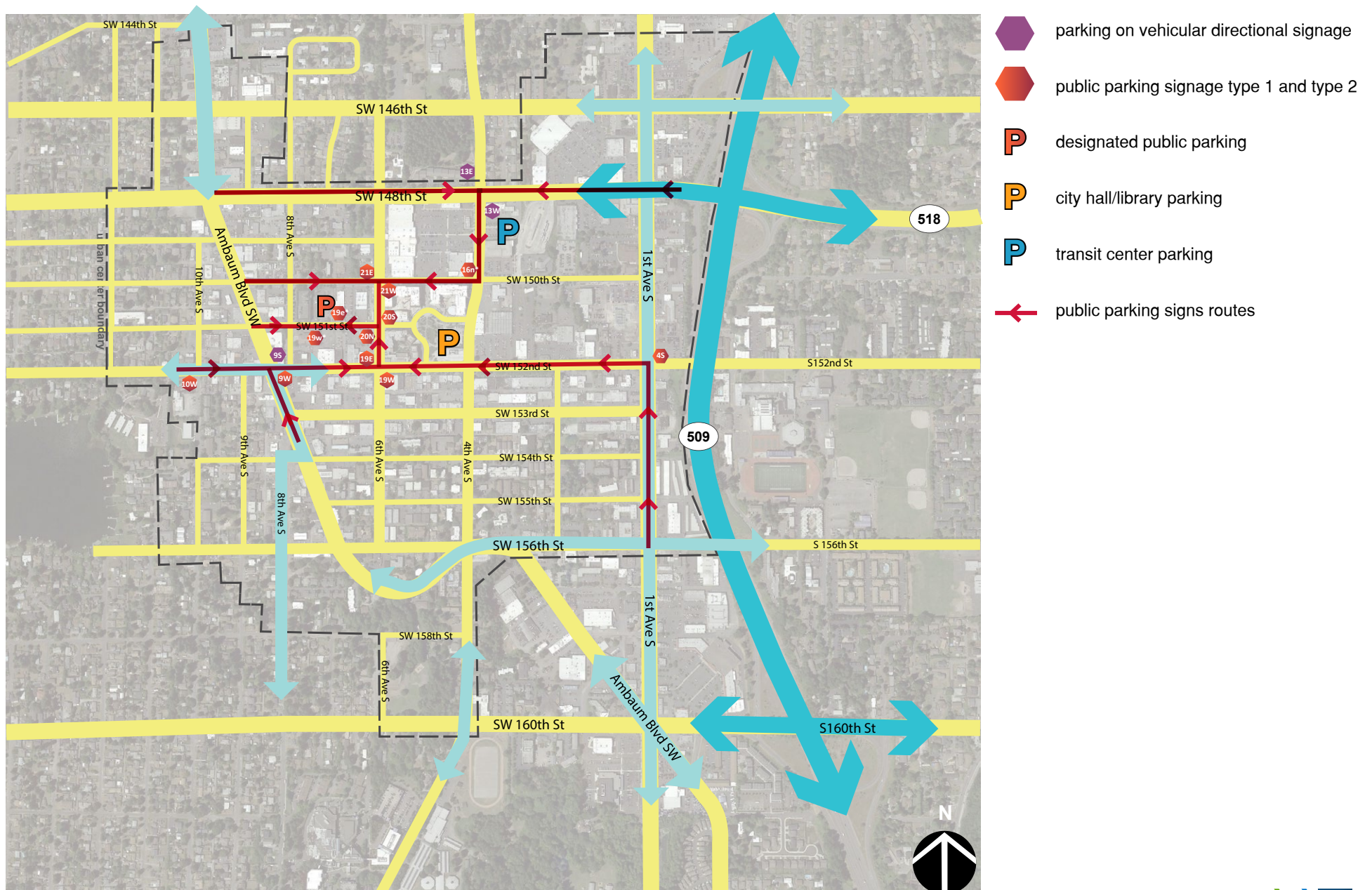


this page is intentionally left blank

APPENDIX C: PHASE 1 WAYFINDING SIGN LOCATION PLAN



APPENDIX C: PHASE 1 PUBLIC PARKING SIGN LOCATION PLAN



APPENDIX C: PHASE 1 SIGN LOCATION MATRIX

2N	Vehicular	SW of SW 148th St./1st Ave. S. Facing north on existing SW corner signal pole.	<SR 509/518, ^Downtown#, ^Town Square, >Transit Center#, >Seahurst Park#	#Shopping logo, #Transit Center logo, #Seahurst Park logo
2S	Vehicular	NE of SW 148th St./1st Ave. S. Facing south on existing NE corner signal pole.	>SR 509/518, <Transit Center#, <Community Center, <Seahurst Park#,	#Transit Center logo, #Seahurst Park logo,
2E	Vehicular	NW of SW 148th St./1st Ave. S. Facing east on existing NW corner signal pole.	<^Downtown#, ^Transit Center#, ^Community Center, ^Seahurst Park#,	#Shopping logo, #Transit Center logo, #Seahurst Park logo,
4N	Vehicular	SW of SW 152nd St./1st Ave. S. Facing north on existing SW corner signal pole.	<Highline H.S., <Performing Arts Center, >Town Square, >Olde Burien#	Locate sign just below vehicle signal head and above ped signal head. #Dining logo
4S	Vehicular	NE of SW 152nd St./1st Ave. S. Facing south on existing NE corner signal pole.	>Highline H.S., >Performing Arts Center, <Town Square, <Olde Burien#	#Dining logo
4S	Public Parking Type 1	NE of SW 152nd St./1st Ave. S. Facing south on existing luminaire pole south of intersection.	< PUBLIC PARKING	Locate on luminaire pole at back of walk, west of Rent-A-Center.
4E	Vehicular	NW of SW 152nd St./1st Ave. S. Facing east on existing NW corner signal pole.	>Transit Center#, ^Town Square, ^Olde Burien#, ^Seahurst Park#	#Transit Center logo, #Dining logo, #Seahurst Park logo
5N	Custom Vehicular	SW of SW 153rd St./1st Ave. S. Facing north on existing luminaire pole at SW corner of intersection.	>Shopping/Dining#	#shopping/dining logo
5S	Vehicular	NE of SW 153rd St./1st Ave. S. Facing south on existing east luminaire pole at intersection.	<Shopping/Dining#, ^Transit Center#, ^Seahurst Park#	#shopping/dining logo, #Transit Center logo, #Seahurst Park logo
5n*	MUTCD	SW 158th St./4th Ave. SW. Facing north on existing street name sign pole at intersection.	>Dog Park#	#Dog Park logo
5e*	MUTCD	SW 158th St./6th Ave. SW. Facing east on existing street name sign pole at intersection.	<Dog Park#	#Dog Park logo
6E	Vehicular	NW of SW 156th St./1st Ave. S. Facing east on existing NW corner signal pole.	^Olde Burien#, ^Soc Sec Admin, >Transit Center#	#Dining logo, #Transit Center logo, #Dog Park logo
7S	Vehicular	NE of SW 156th St./4th Ave. SW. Facing south on existing NE corner signal pole.	^Transit Center#, ^Town Square, >Soc Sec Admin, <Olde Burien#	#Transit Center logo, #Dining logo
7W	Vehicular	SW of SW 156th St./4th Ave. SW. Facing west on existing SE corner signal pole.	^Soc Sec Admin, ^Moshier Arts Center, >Dog Park#	#Dog Park logo
8N	Vehicular	NW of Ambaum Blvd. SW/ SW 153rd St. Facing north on existing signal pole on north west side of intersection.	<Shopping/Dining#, ^Moshier Arts Center, ^Dog Park#	#shopping/dining logo, #Dog Park logo

APPENDIX C: PHASE 1 SIGN LOCATION MATRIX

8S	Vehicular	NE of Ambaum Blvd. SW/ SW 153rd St. Facing south on existing NE corner signal pole.	>Shopping/Dining#, ^Olde Burien#, ^Town Square, ^Seahurst Park#	#shopping/dining logo, #Dining logo, #Seahurst Park logo
9	Information Kiosk Sign Retrofit	NE of Ambaum Blvd. SW/ SW 152nd St. On sidewalk, facing east and west parallel with roadway.	Downtown Map	
9N	Vehicular	SW of Ambaum Blvd. SW/ SW 152nd St. Facing north on existing SW corner signal pole.	<City Hall, <Library#, <Town Square, >Olde Burien#	#Library logo, #Dining logo
9S	Vehicular	NE of Ambaum Blvd. SW/ SW 152nd St. Facing south on existing NE corner signal pole.	<Olde Burien#, >Town Square, >Parking#	#Dining logo, #Parking logo
9W	Vehicular	SE of Ambaum Blvd. SW/ SW 152nd St. Facing west on existing SE corner signal pole.	^Town Square, ^Performing Arts Center, >Dog Park#, <Seahurst Park#	#Seahurst Park logo, #Dog Park logo
9W	Public Parking Type 1	SE of Ambaum Blvd. SW/ SW 152nd St. Facing west in ground on new pole, 2'-0" from inside west edge of planter and 2'-0" from face of curb.	^ PUBLIC PARKING	
10W	Public Parking Type 1	SW of 9th Ave SW/ SW 152nd St. Facing west on new pole in sidewalk 4'-0" east of intersection and 2'-0" from face of curb.	^ PUBLIC PARKING	Concrete sidewalk removal and replacement required.
10N	Vehicular	NW of Ambaum Blvd. SW/ SW 150th St. Facing north on new pole in sidewalk at curb return and 2'-0" from face of curb.	<Post Office, <District Court, <Police Station,<Town Square	Concrete sidewalk removal and replacement required.
11N	Vehicular	NW of Ambaum Blvd. SW/ SW 148th St. Facing east on existing NW corner signal pole.	^Downtown#, ^Olde Burien#, <Community Center, <Transit Center#	#Shopping logo, #Dining logo, #Transit Center logo
11S	Vehicular	NE of Ambaum Blvd. SW/ SW 148th St. Facing south on existing NE corner signal pole.	>Community Center, >Transit Center#, ^Seahurst Park#	#Transit Center logo #Seahurst Park logo
11E	Vehicular	SW of Ambaum Blvd. SW/ SW 148th St. Facing east on existing SW corner signal pole.	<Olde Burien#, <Historical Museum, >Seahurst Park#	#Dining logo, #Seahurst Park logo
12s*	Custom Vehicular	NE of Ambaum Blvd. SW/ SW 144th St. Facing south on existing NE corner signal pole.	<Seahurst Park#	#Seahurst Park logo
13E	Vehicular	NW of 4th Ave SW/SW 148th St. Facing east on existing NW corner signal pole.	<Parking#, <Town Square, ^Community Center, ^Seahurst Park#	Locate sign just above Burien planter brackets. #Parking logo #Seahurst Park logo
13W	Vehicular	NW of 4th Ave SW/SW 148th St. Facing west on existing SE corner signal pole.	>Parking#, >Transit Center#, >Town Square, >Town Square Park	Locate sign just above Burien planter brackets. #Parking logo #Transit Center logo

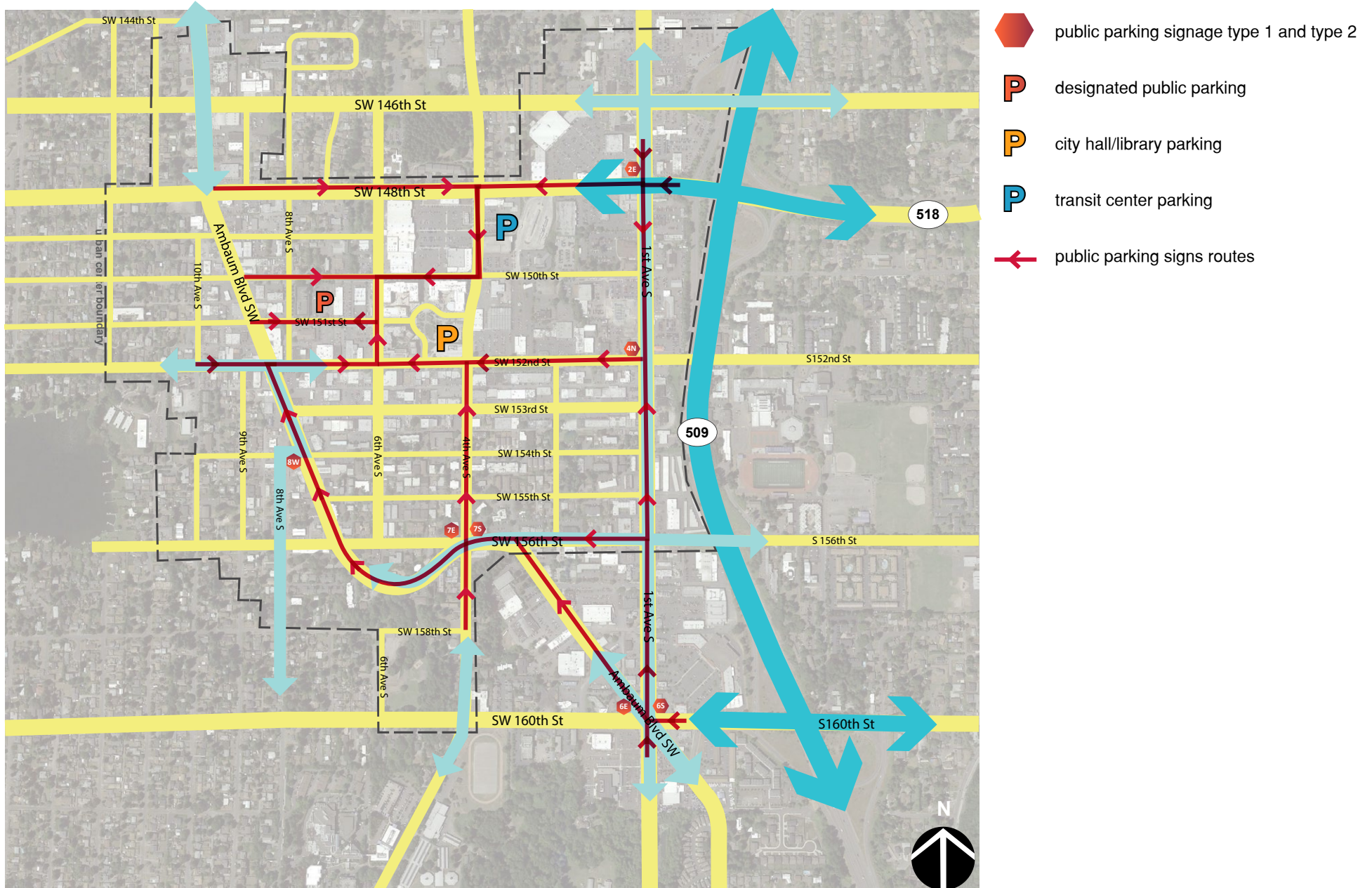
APPENDIX C: PHASE 1 SIGN LOCATION MATRIX

16n*	Public Parking Type 2	NW corner of 4th Ave SW/SW 151st St. Sign facing north, on pedestrian luminaire pole.	> PUBLIC PARKING	Attach to existing pedestrian luminaire pole.
16	Information Kiosk Sign Retrofit	NW of 4th Ave SW/SW 152nd St. On sidewalk, facing east and west parallel with roadway.	Downtown Map	
19E	Public Parking Type 1	NE of 6th Ave SW/SW 152nd St. Facing east on existing NW corner signal pole.	> PUBLIC PARKING	
19W	Public Parking Type 1	SW of 6th Ave SW/SW 152nd St. Facing west on existing SE corner signal pole.	< PUBLIC PARKING	
19e*	Public Parking Type 2	NE of 6th Ave SW/SW 151st St. Facing east on new pole.	> PUBLIC PARKING	Locate mid-block in pavement east of existing utility pole in line with existing concrete retaining wall. Pavement removal and replacement required.
19w*	Public Parking Type 2	SW of 6th Ave SW/SW 151st St. Facing west on new pole.	< PUBLIC PARKING	Locate mid-block 2' north of existing utility pole in planter. Restoration required.
20N	Public Parking Type 1	NW of 6th Ave SW/SW 151st St. Facing north on existing SW corner luminaire pole.	> PUBLIC PARKING	Locate on luminaire pole just above street name sign.
20S	Public Parking Type 1	SE of 6th Ave SW/SW 151st St. Facing south on existing NE corner luminaire pole.	< PUBLIC PARKING	Locate on luminaire pole just above street name sign.
21E	Public Parking Type 1	SE of 6th Ave SW/SW 148th St. Facing east on new pole east of the intersection.	< PUBLIC PARKING	Locate in ground 2' from back of curb equal distance from existing utility pole and guide sign. Restoration required.
21W	Public Parking Type 1	NW of 6th Ave SW/SW 148th St. Facing west on new pole west of the intersection.	> PUBLIC PARKING	Locate in ground 2' behind existing fence post. Restoration required.

this page is intentionally left blank



APPENDIX C: PHASE 2 PUBLIC PARKING SIGN LOCATION PLAN



APPENDIX C: PHASE 2 SIGN LOCATION MATRIX

1N	Vehicular	SW of SW 146th St./1st Ave. S. Facing north on existing SW corner signal pole.	^Downtown#, ^Transit Center#, >Theater, >Seahurst Park#	Phase II: #Transit Center logo, #Seahurst Park logo, #Shopping logo
1S	Vehicular	NE of SW 146th St./1st Ave. S. Facing south on existing NE corner signal pole.	^Kennedy Cath. H.S., >SR 509 North, <Theater, <Seahurst Park#	Phase II: #Seahurst Park logo
1E	Vehicular	NW of SW 146th St./1st Ave. S. Facing east on existing NW corner signal pole.	^Theater, ^Seahurst Park#, <Downtown#, <Transit Center#	Phase II: #Seahurst Park logo, #Transit Center logo, #Shopping logo
2E	Public Parking Type 1	NE of SW 148th St./1st Ave. S. Facing east on new pole and foundation, located east of the NE corner sidewalk.	^PUBLIC PARKING	Phase II
3N	Vehicular	SW of SW 150th St./1st Ave. S. Facing north on existing SW corner signal pole.	>Transit Center#, >Town Square,>Police Station, >District Court	Phase II: #Transit Center logo
3S	Vehicular	NE of SW 150th St./1st Ave. S. Facing south on existing NE corner signal pole.	<Transit Center#, <Town Square, <Police Station, <District Court	Phase II: #Transit Center logo,
4N	Public Parking Type 1	SW of SW 150th St./1st Ave. S. Facing north on existing roadway pole north of intersection.	> PUBLIC PARKING	Phase II
6N	Vehicular	SW of SW 160th St./1st Ave. S. Facing north on existing SW corner signal pole.	^Downtown#, >Dog Park#	Phase II: #Dog Park logo, #Shopping logo
6S	Vehicular	NE of SW 160th St./1st Ave. S. Facing south on existing NE corner signal pole.	^Downtown#, ^Seahurst Park#, <Dog Park#	Phase II: #Dog Park logo, #Seahurst Park logo, #Shopping logo
6S	Public Parking Type 1	NE of SW 160th St./1st Ave. S. Facing south on existing roadway pole south of intersection.	^ PUBLIC PARKING	Phase II
6E	Public Parking Type 1	NW of SW 160th St./1st Ave. S. Facing east on existing roadway pole east of intersection.	> PUBLIC PARKING	Phase II
7E	Vehicular	NW of SW 156th St./4th Ave. SW. Facing east on existing NW corner signal pole.	^Olde Burien#, <Dog Park#, >Town Square, >City Hall, >Library#	Phase II: #Library logo, #Dog Park logo, #Dining logo
7E	Public Parking Type 1	NW of SW 156th St./4th Ave. SW. Facing east on existing roadway pole east of intersection.	> PUBLIC PARKING	Phase II
7S	Public Parking Type 1	NE of SW 156th St./4th Ave. SW. Facing south on existing roadway pole south of intersection.	^PUBLIC PARKING	Phase II

APPENDIX C: PHASE 2 SIGN LOCATION MATRIX

8W	Vehicular	SE of Ambaum Blvd. SW/ SW 154th St. Facing west in ground on new pole at SE corner.	<Olde Burien#, <Town Square, <Seahurst Park#, >Dog Park#	Phase II #Seahurst Park logo, #Dog Park logo, #Dining logo. Restoration required.
8W	Public Parking Type 2	SW of Ambaum Blvd. SW/ SW 154th St. Facing west in ground on new pole at SW corner.	< PUBLIC PARKING	Phase II Restoration required.
9	Information Kiosk	NE of Ambaum Blvd. SW/ SW 152nd St. On sidewalk, facing east and west parallel with roadway.	Phase II	Phase II
9	Pedestrian Bike	9th Ave SW/ SW 152nd St. Located on SE corner of intersection on new pole.	N: Wave Banner Blade E: Visitor Center, Farmer's Market, Town Square, Town Square Park, City Hall, Library	Phase II: Locate on sidewalk at location where previous pole was located between the two ADA ramps. Concrete sidewalk removal and replacement required.
10	Pedestrian Bike	NE of Ambaum Blvd. SW/ SW 150th St. Facing south on SE corner of intersection on new pole.	N: Seahurst Park S: Olde Burien, Historical Museum W: Wave Banner Blade E: District Court, Police Station, Post Office, Transit Center	Phase II : pavement removal and replacement required.
12E	Vehicular	NW of Ambaum Blvd. SW/ SW 146th St. Facing east on existing NW corner signal pole.	<Olde Burien#, <Historical Museum, >Seahurst Park#	Phase II: #Seahurst Park logo, #Dining logo
12N	Vehicular	SW of Ambaum Blvd. SW/ SW 146th St. Facing north on existing SW corner signal pole.	<Skateboard Park, <Theater, ^Downtown#, <Dottie Harper Park	Phase II: #Shopping logo
12S	Vehicular	NE of Ambaum Blvd. SW/ SW 146th St. Facing south on existing NE corner signal pole.	^Seahurst Park#, >Skateboard Park, >Theater, >Dottie Harper Park	Phase II: #Seahurst Park logo
12	Pedestrian Bike	SE corner of 4th Ave SW/SW 146th St. Facing all directions.	N: Skateboard Park, Theater S: Dottie Harper Park, Transit Center, Town Square, Town Square Park W: Wave Banner Blade	Phase II: Locate in ground just 4' behind ADA ramp. Restoration required.
13	Pedestrian Bike	SW corner of 4th Ave SW/SW 148th St. Facing all directions.	N: Dottie Harper Park, Skateboard Park, Theater, Seahurst Park S: Town Square, City Hall, Library W: Wave Banner Blade E: Transit Center	Phase II: Locate In ground behind ADA ramp adjacent to NW Import Auto Services sign. Restoration required.
14	Pedestrian Bike	Transit Center plaza walkway area.	N: Wave Banner Blade W: Police Station, Lake Burien School Park, Seahurst Park S: Visitor Center, Farmer's Market, Town Square	Phase II: Locate on sidewalk adjacent to bike racks at mid-block walkway and plaza area.
15	Pedestrian Bike	NE corner of 4th Ave SW/SW 150th St. Facing all directions.	N: Dottie Harper Park, Skateboard Park, Theater S: Transit Center, Town Square, Library, City Hall, Visitor Center, Farmer's Market W: Post Office, District Court, Police Station E: Wave Banner Blade	Phase II: Sawcut 6'x6' cement concrete sidewalk area for concrete foundation installation. Locate pole at back edge of sidewalk and replace concrete sidewalk over foundation.
15	Information Kiosk	SW of 4th Ave SW/SW 150th St. On sidewalk, facing east and west parallel with roadway.	Phase II	Phase II: Remove existing kiosk and replace with new information kiosk on site.

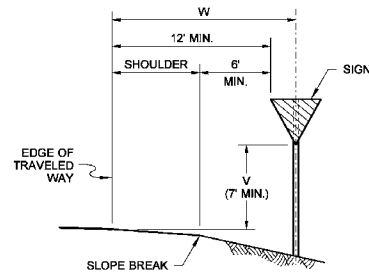
APPENDIX C: PHASE 2 SIGN LOCATION MATRIX

16	Pedestrian Bike	NE corner of 4th Ave SW/SW 152nd St. Facing all directions.	N: Dottie Harper Park, Skateboard Park, Theater, Transit Center W: Town Square, Library, City Hall, Visitor Center, Olde Burien, Historical Museum E: Performing Arts Center, Highline H.S. S: Wave Banner Blade	Phase II: Locate in ground inside of square planter at corner plaza area. Restoration required.
16	Information Kiosk	NW of 4th Ave SW/SW 152nd St. On sidewalk, facing east and west parallel with roadway.	Phase II	Phase II: Remove existing kiosk and replace with new information kiosk on site.
17	Pedestrian Bike	NE corner of 4th Ave SW/SW 153rd St. Facing all directions.	N: Visitor Center, Library, City Hall, Farmer's Market, Town Square S: Dog Park W: Olde Burien, Historical Museum, Seahurst Park E: Wave Banner Blade	Phase II: Locate adjacent to Pepboys Auto sign at back side of sidewalk. Pavement removal and replacement required.
18	Pedestrian Bike	NW corner of 6th Ave SW/SW 153rd St. Facing all directions.	N: Town Square, Farmer's Market, Post Office, District Court, Police Station, Community Center W: Seahurst Park E: Wave Banner Blade	Phase II: Locate adjacent to Stromer's Cleaners sign and concrete planter pot behind back of sidewalk. Pavement removal and replacement required.
19	Pedestrian Bike	NW corner of 6th Ave SW/SW 152nd St. Facing all directions.	N: Post Office, District Court, Police Station, Community Center S: Wave Banner Blade W: Historical Museum, Olde Burien E: Farmer's Market, City Hall, Library, Town Square, Visitor Center	Phase II: Locate on triangular wedge within cement concrete sidewalk. Concrete sidewalk removal and replacement required.
20	Pedestrian Bike	NW corner of 6th Ave SW/SW 150th St. Facing all directions.	N: District Court, Police Station, Community Center W: Post Office E: Transit Center, Town Square, Town Square Park S: Wave Banner Blade	Phase II: Locate behind back of sidewalk in ground midway between ADA ramps. Concrete foundation to avoid utility conflicts underground.
21	Pedestrian Bike	SW corner of 6th Ave SW/SW 148th St. Facing all directions.	W: Wave Banner Blade S: District Court, Police Station, Post Office E: Seahurst Park N: Community Center, Transit Center	Phase II: Locate near street name sign on SW corner. Replaces existing directional signs for District Courts and Burien Comm. Center
22	Pedestrian Bike	SW corner of 6th Ave SW/SW 146th St. Facing all directions.	E: Seahurst Park, W: S: Town Square, Town Square Park	Phase II: Locate In ground just 4' behind ADA ramp. Restoration required. Sign content replaces existing directional signage to Burien Comm. Center across the street

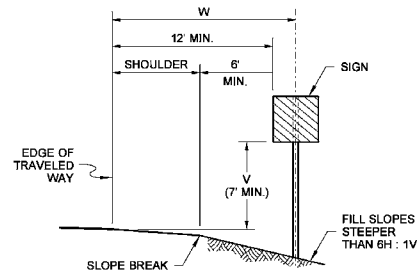
this page is intentionally left blank

APPENDIX D: APPLICABLE WSDOT STANDARD DETAILS

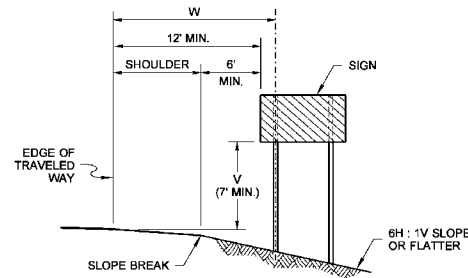
STANDARD PLAN G-20.10-02: GROUND-MOUNTED SIGN PLACEMENT



**SIGN INSTALLATION
IN FILL SECTION**

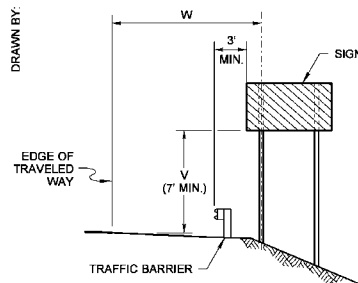


**SIGN INSTALLATION
ON STEEP FILL SLOPES**

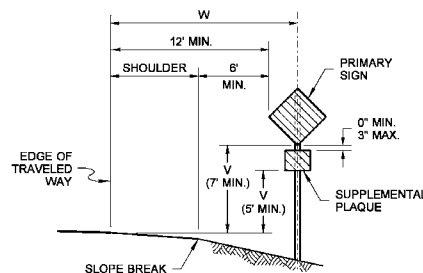


**MULTIPLE SIGN POST INSTALLATION
IN FILL SECTION**

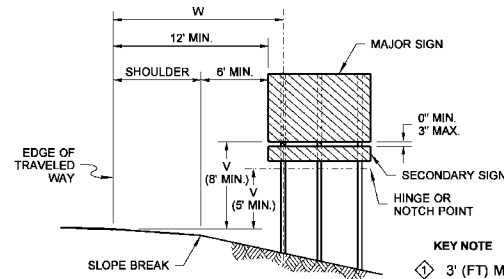
DRAWN BY: FERN UDDELL



**SIGN INSTALLATION
BEHIND TRAFFIC BARRIER**

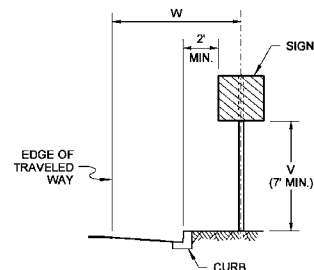


**SIGN WITH SUPPLEMENTAL
PLAQUE INSTALLATION
IN FILL SECTION**

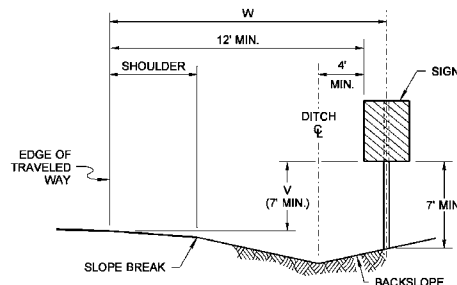


**GUIDE OR DIRECTIONAL SIGN WITH
SECONDARY SIGN INSTALLATION ON
EXPRESSWAYS AND FREEWAYS**

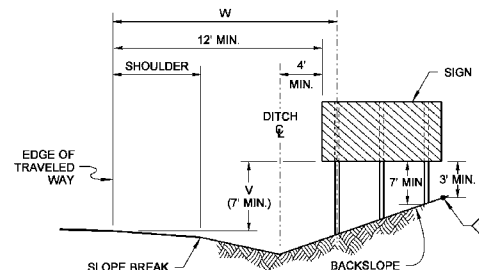
KEY NOTE
① 3' (FT) MIN. FROM ANY POINT ALONG BOTTOM
EDGE OF SIGN PANEL TO THE GROUND



**SIGN INSTALLATION
IN CURB SECTION**



**SIGN INSTALLATION
IN DITCH SECTION**



**MULTIPLE SIGN POST INSTALLATION
IN DITCH SECTION**

NOTES

1. Refer to the Sign Specification Sheet of the Contract for the 'V' and 'W' distances.
2. The minimum vertical distance from the bottom of the sign to the ground shall not be less than 7' (ft) for signs located within the Design Clear Zone.



Nisbet, John
Jun 22 2015 9:43 AM

GROUND-MOUNTED SIGN PLACEMENT STANDARD PLAN G-20.10-02

SHEET 1 OF 1 SHEET

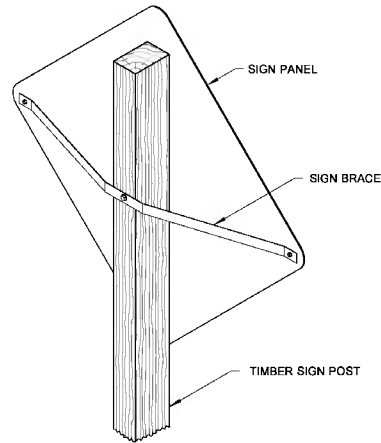
APPROVED FOR PUBLICATION
Jun 23 2015 7:35 AM

STATE DESIGN ENGINEER
Washington State Department of Transportation

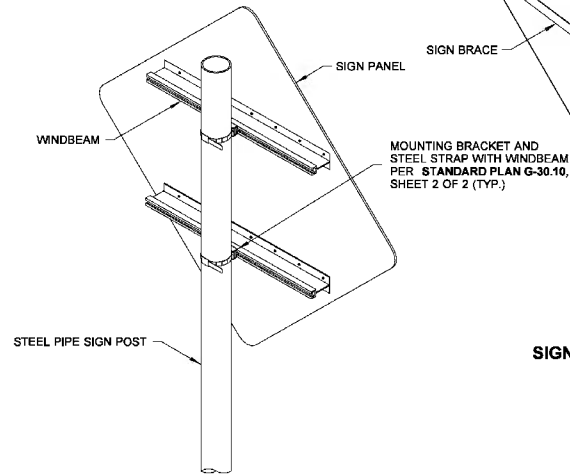
APPENDIX D: APPLICABLE WSDOT STANDARD DETAILS

STANDARD PLAN G-50.10-02: SIGN BRACING

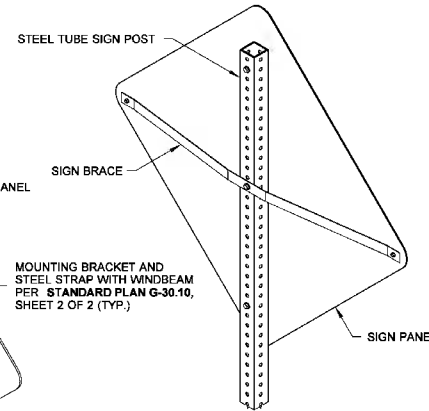
DRAWN BY: FERN LIDDELL



SIGN BRACE ON TIMBER POST



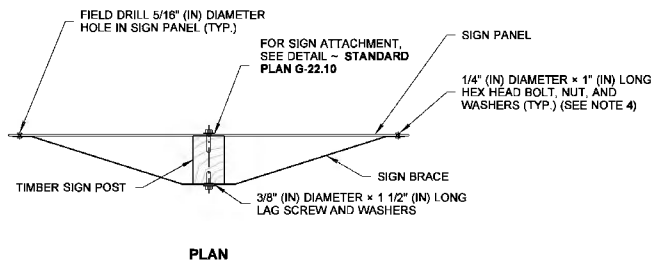
SIGN BRACE ON STEEL PIPE



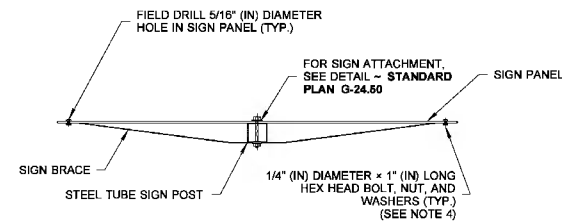
SIGN BRACE ON STEEL TUBE

NOTES

1. Mounting brackets with steel straps shall be a stainless steel band and buckle system product or an approved equal. Mounting brackets shall be one bolt, flared leg; steel straps shall be 3/4" (in) wide and 0.030" (in) thick.
2. Sign braces are required for sign widths of 48" (in) or greater. For sign widths of 36" (in), the sign braces are only installed when specified in the contract.
3. Sign braces are typically necessary on large sign panels that are exposed to high winds, traffic generated wind buffeting, or when snow thrown from plows might impact the sign.
4. A nylon washer shall be placed between the sign and the steel washer when the sign face has Type III, IV, VIII or IX sheeting.
5. Signs 48" (in) or greater can be pinned together, back to back.
6. For signs installed back to back on a single post, no bracing is required.



PLAN



PLAN



SIGN BRACING

STANDARD PLAN G-50.10-02

SHEET 1 OF 2 SHEETS

APPROVED FOR PUBLICATION

STATE DESIGN ENGINEER
Washington State Department of Transportation

APPENDIX D: APPLICABLE WSDOT STANDARD DETAILS

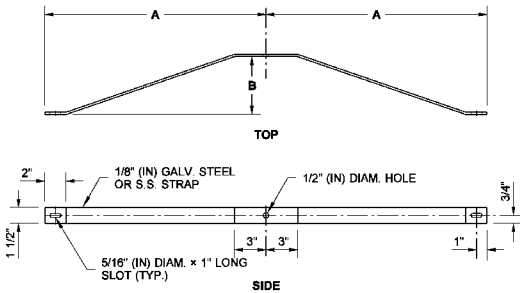
STANDARD PLAN G-50.10-02: SIGN BRACING

DRAWN BY: FERN LIDDELL

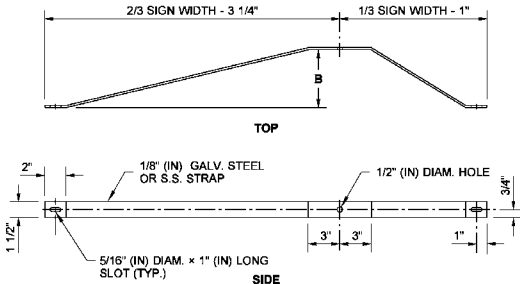
SIGN BRACE DIMENSIONS				
	SIGN TYPE			
	YIELD	DIAMOND-SHAPED		OTHERS
A	1/3 SIGN WIDTH - 1 3/4"	1/2 SIGN WIDTH - 2 1/4"		1/2 SIGN WIDTH - 1"
B	SIGN POST TYPE			
	4x6 OR 6x6 TIMBER POST	5x8 TIMBER POST	3" DIAM. STEEL PIPE	2 1/2" SQUARE TUBE
	5 1/2"	7 1/2"	4 3/4"	2 1/2"

NOTE

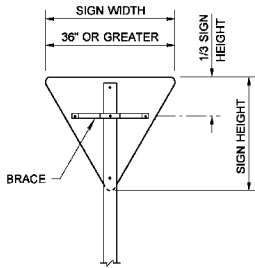
- For sign installations on round steel posts, see Standard Plan G-30.10, sheet 2 of 2.



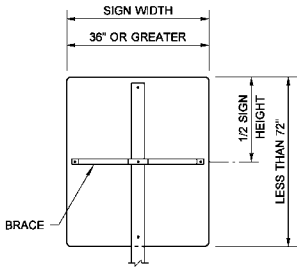
SIGN BRACE DETAIL



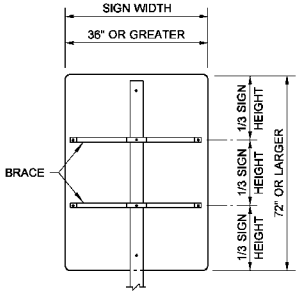
NO PASSING ZONE SIGN BRACE DETAIL



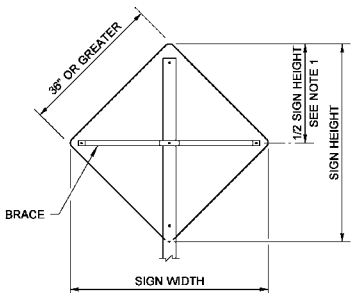
YIELD SIGN



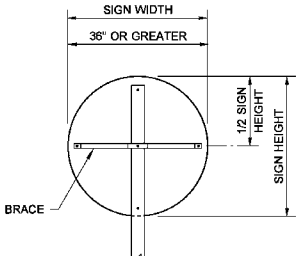
SMALL RECTANGULAR SIGN



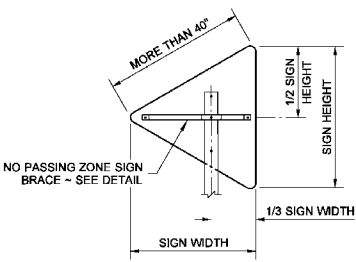
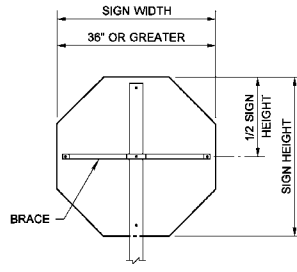
LARGE RECTANGULAR SIGN



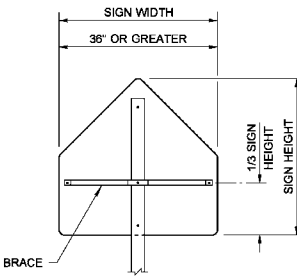
DIAMOND-SHAPED SIGN



RAILROAD WARNING SIGN

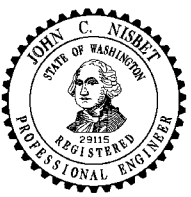


NO PASSING ZONE SIGN



SCHOOL ZONE SIGN

SIGN BRACE PLACEMENT



SIGN BRACING

STANDARD PLAN G-50.10-02

SHEET 2 OF 2 SHEETS

APPROVED FOR PUBLICATION

STATE DESIGN ENGINEER
Washington State Department of Transportation

this page is intentionally left blank

